



Eclipse 4250 V3

This new version of the Eclipse 4250 is different in three ways:

1. Power supply is 12 VDC instead of 24 VAC.
2. The Network adapter is now a USR-TCP 232
3. The basic timer value for a 1 Once shot (30ml) is now 36 instead of 32.

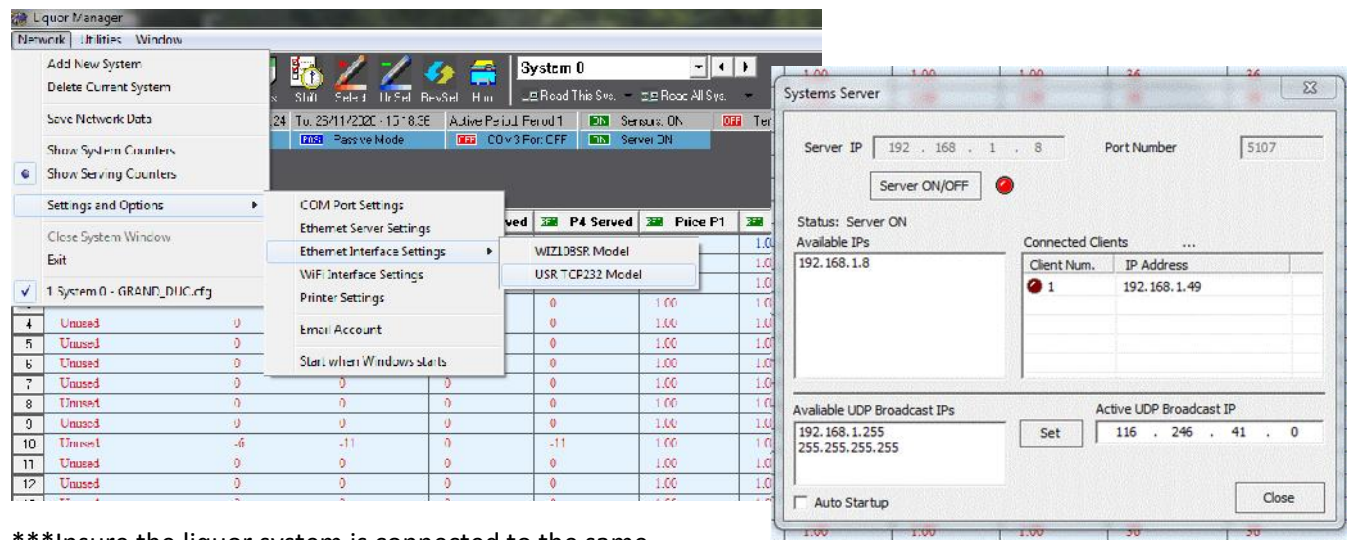
To connect the network adapter to the software, the latest Liquor Manager version must be used.

http://www.auper.com/userfiles/Auper%20Softwares/LM_Live_20200304.zip

A licence number will be required. Please Email or call the factory.

Network adapter:

To connect the Eclipse 4250 to your computer network, you will use the **USR-TCP232 search tool**.



***Insure the liquor system is connected to the same network as the computer used for the software.

Go to the Liquor manager window and open the **server**. Network/Settings and option/Ethernet server settings.

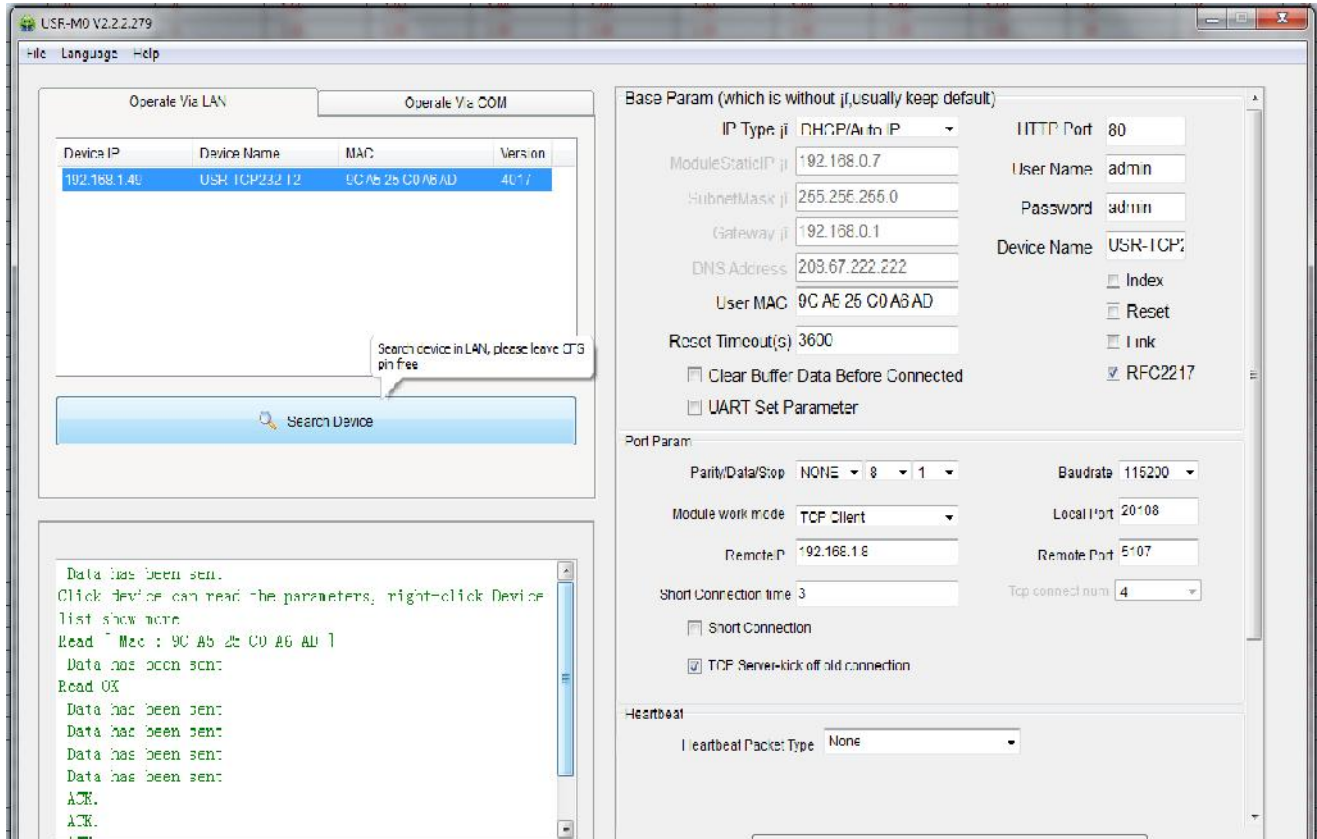
The IP address of the computer is listed in the available IPs. Type this IP in the Server IP window if needed.

Click Server ON/Off to start the server.

Check the box called Auto Startup.



Click the search device button.



The Eclipse 4250 network adapters will reply with their individual MAC addresses.

Click on the Mac address to select the network adapter to program.

IP Type: DHCP to let your router provide the IP address. If you need to, you can select Static and enter the static IP you wish to use.

Module Work Mode: TCP Client

Remote IP: Type the same IP as in the Liquor Manager Server IP box.

Remote Port: Set at 5107 by default. Use the same as in the Liquor manager server.

Baud rate: Enter the baud rate selected in the Eclipse 4250 liquor system program. Default is set 115 Kbytes.

Do not change any of the other settings.

Click the Save Config button at the bottom.

Within a few seconds, the network adapter will connect to the server. You will see the IP address in the connected clients.

To move to the next liquor system, select the next MAC address.