

Auper Electronic Controls Inc

Liquor Manager ID+

User's Guide



Rev: 04/2010





PART 1: DOWNLOAD

To avoid waste and preserve the environment, Auper does not supply a CD anymore with the Eclipse system. The serial number for the user's license is supplied with the Eclipse ID.

The software has to be downloaded from the web server: www.auper.com/public/software

- Click on **SOFTWARE** and choose the **LIQUOR MANAGER ID INSTALL DISK.zip** file. Windows will ask you if you want to **Open** or **Save** the file. Save it.
- Select where you want to save that file on the disk.

The files are compressed in a zip file. You will have to unzip them. If you use Windows XP, Windows Vista or Windows 7, the files will be unzipped by Windows. For earlier versions of Windows, you will have to use WINZIP.

- Click on **Extract All**
- Windows will ask you where you want to extract the files.
- Choose a disk and enter the file name **C: or D:/LIQUOR MANAGER ID INSTALL DISK**

INSTALLATION

- Go in the file **LIQUOR MANAGER ID INSTALL DISK**
- Click on **Setup.exe**
- Click on **Next**
- Enter the **serial number** and click on **Next**.
- Enter your **passwords**.
- Click on **Next** to accept where the folder will be installed **C:/Auper/Liquor Manager**.
- Click on **Next** to accept the shortcuts in Windows' Start menu.
- Click on **OK** when the message that Liquor Manager has been installed correctly appears.

START

To start Liquor Manager, select the shortcuts for Liquor Manager and double-click on the Liquor Manager icon. The first time you open Liquor Manager, the software might warn you that there is an error on the selected Com port.

- Enter the password chosen at the installation and click **OK**.
 - **Master Password:** System administrator's password, needed to make configuration changes and to program the Eclipse system.
 - **User Password:** Needed to run Liquor Manager and to use non-critical functions such as reading the counters, save documents, print reports ...etc.

The first time that you use Liquor Manager, a grey and empty main window will appear.

- Click on **Network** and on **System Window** to open the Liquor Manager screen.

UNLOCKING

The padlock at the top right side of the screen can be unlocked using the Master Password.

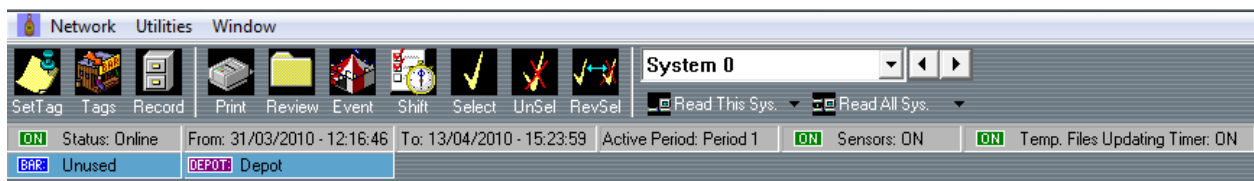
- Click once on the padlock.
- Enter the Master Password.

PART 2: DESCRIPTION OF THE SYSTEM WINDOW

The system window has a table with 23 columns identified as:

1. **Num** (pouler number from 0 to 255)
2. **Brand** (product name)
3. **Poured S, R, L and SP** (number of pour sizes served during that period)
4. **Promo** (unavailable)
5. **Price \$ S, R, L and SP** (Price field per portion displayed on the system's screen)
6. **Size S, R, L and SP** (size to be served in oz or in CL)
7. **Timers S, R, L and SP** (timer values from 0 to 255)
8. **Category** (Type of drink for report classification)

MENUS AND ICONS



SetTag: this window is used to set tags (products, categories, bar names, drink depots and coefficients) to the pouler numbers and to the Eclipse systems.

Tags: To enter items in the database (products, category, bar, depot and coefficients)

Record: List of counter records classified by date saved on the disk by the software. You will use it to clear unnecessary records that uses disk space for nothing.

Print: To print reports.

Review: To select a period from the saved counter records to view on the screen instead of printing a report.

Select: To select all lines.

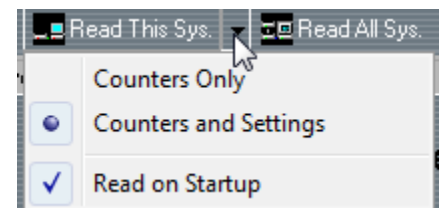
UnSel: To unselect all lines.

RevSel: To reverse line selection.

System 0: The software uses a system number to identify the system it is communicating with. Each Eclipse connected to your computer has to be programmed with a system number from 0 to 99. Each system also has to have its own window in Liquor Manager. You cannot keep a system number in Liquor Manager that is not connected to your computer. The software will try to communicate with it and this will cause a communication error.



Read This Sys: To download the counters for the selected system. You can choose to read only the counters (faster) or the counters and the configuration. If you click on Read on Start up, the data will be downloaded as soon as the software starts.



Recommended: Put a tick on **Read on Start up** to start a communication automatically when the software starts to update the counters and the system status. The counters will not be saved automatically.

Read All Sys: If you have many Eclipse systems on a RS-422 network, this function will let you download all counters from all the systems at the same time.

Status: When the Status icon is green and says Online, it means that the software has communicated with the Eclipse system. When the Status icon is red and says Offline, it means that the software has not communicated yet with the Eclipse system.

From: 01/02/10 – 11:00:00: Shows the start time and date for the displayed period.

To: 01/02/10 – 17:00:00: Shows the end time and date for the displayed period.

Review: The displayed counters correspond to the selected time and date.

Active Period (1, 2 or 3): On the Eclipse S3, up to 3 periods corresponding to a shift or to an employee can be displayed on the screen depending on the system configuration.

Sensors Off/On: If the sensors icon is green and shows ON, the sensors to decode the pourers are on and the system is working correctly. If the sensors icon is red and shows OFF, the sensors to decode the pourers are off and the system will not work. The software can only see the status of the sensors if there was a communication done with the system.

Temp Files Updating Timer: This function can be used to export the counters to an external application generating a temporary text file containing the Eclipse system counters refreshed on a regular basis (Timer). The Eclipse system has to be interfaced to the computer in POS ENABLED (3) mode with Liquor Manager running. The software allows the system to serve the pours and will display the counters as the pours are served. If the software is not running, the system will not work.

Bar: Indicates to which bar the system is assigned to.

Depot: Indicates to which drink depot the system is assigned to.

Network

Click on Network to get to the following items.

Add New System:

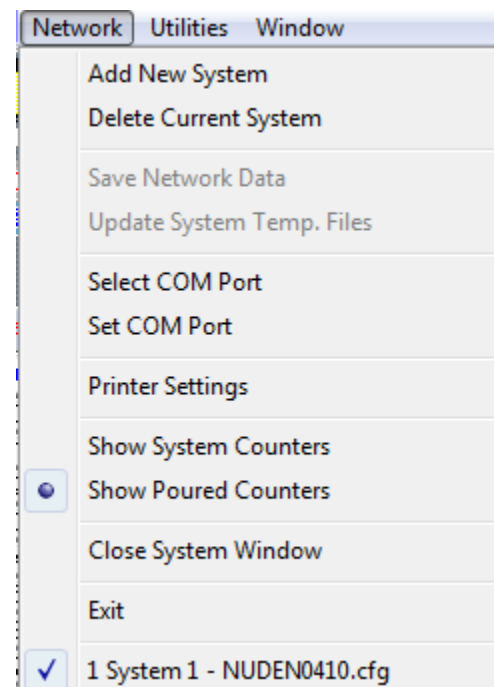
- Click on **Network** and then **Add New System**.
- Select the model of your Eclipse system in the **Type of System** window.
- Select the system number you wish to connect to Liquor Manager.

Delete Current System:

- Select the system so it can be displayed on the screen.
- Select **Network** and then click on **Delete Current System**.
- Click on **YES** to confirm that you really want to delete the current system.

Save Network data: Use to save manually.

- Click on **Read All Sys...** and click on **Save Network Data** to save the counters in the file.



Update System Temp Files: Use to update the file manually.

- Click on **Read All Sys...** and click on **Update System Temp Files** to save the counters in the file.

Select COM Port: Select the COM port chosen to connect your Eclipse system and click on **OK**. If you use a USB/RS-232 converter, the port number assigned by Windows will be in:

Control Panel/System/Hardware/Device Manager/Ports (Com and Lpt)

Set COM Port: Unavailable if no ports have been selected.

By default :

- Bits per second = 9600
- Data bits = 8
- Parity = none
- Stop bit = 1
- Flow control = none

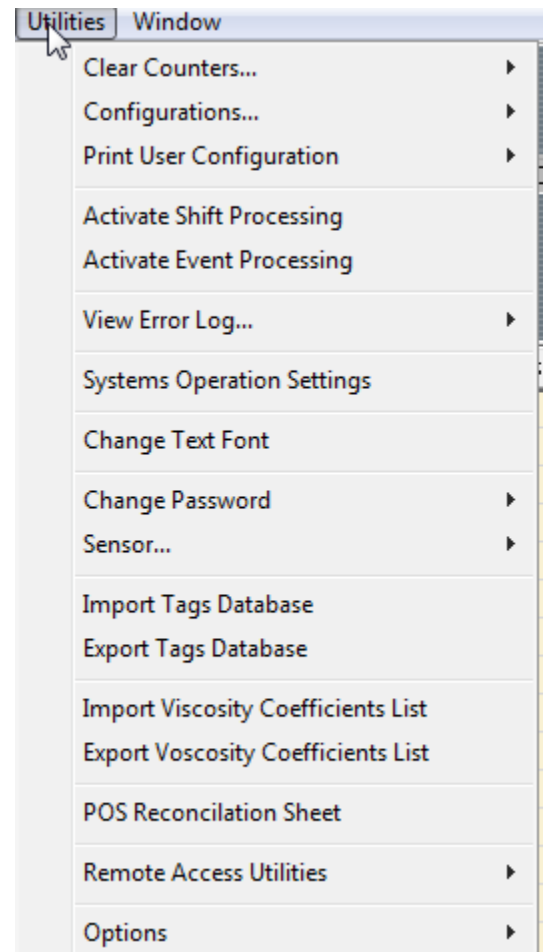
Printer Settings: To select another printer.

Show System Counters: Displays the counters at start up as shown on the Eclipse system screen.

Show Poured Counters: Displays the totals since the counters were saved in the file. Each time the counters are saved, the counters on the screen are reset. The time and date of the last save are displayed in the **From** window mentioned above.

Close System Window: Click to close the **System** window. This function is useless and is intended for future development.

Exit: Click to close Liquor Manager.



Utilities

Clear Counters... : Use to clear the counters on the Eclipse system. Several choices are available.

Configuration...: Click to enter in the configuration menus:

1. **Configuration programming:** Use to program the configuration on the screen in your Eclipse system.
2. **Configuration management:** Use to manage and save your configurations.
3. **POS reconciliation Configuration :** Use to configure POS files and cocktail recipes.

Print User Configuration: To print a copy of your Eclipse system configuration.

Activate Shift Processing: Allows you to start the daily function of counter reading and automatic save at preset times.

Activate Event Processing: Allows you to start automatic reading and saving of the counters at preset periods (Events).

View Error Log: To see the communication error file between the Eclipse and the PC.

Systems Operation Settings: Access to the configuration window of PLUs used for the POS interface.

Change Text Font: To change font and size of characters displayed on the screen.

Change Password: Use to modify passwords.

Sensors: Allows you to disable the system from the PC. The M button on the system will flash to indicate that the sensors are off.

Import Tags Database: To import a system configuration file.

Export tags Database: To export a system configuration file.

Import Viscosity Coefficients List: To import the viscosity coefficient configuration file.

Export Viscosity Coefficients List: To export the viscosity coefficient configuration file.

POS Reconciliation Sheet: To open the sale conciliation file. This function allows you to import a POS file in TXT or CSV format and to reconciie the counters with the items sold.

Remote Access Utilities: To open the client and server functions for network communication.

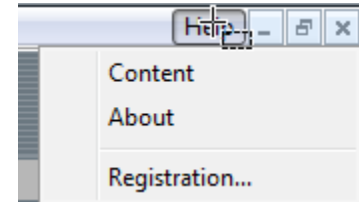
Options: One option available to start Liquor Manager automatically when Windows starts.

Help

Content: To open the Help File in PDF

About : Version identification

Registration...: To start the software registration online or by printing it.

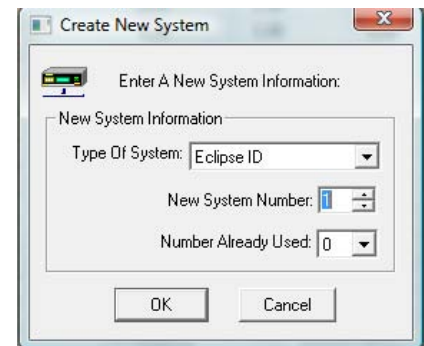


PART 3: COMMUNICATION

The first step once your Eclipse system is connected to the computer is to establish the serial connection. If you have several Eclipse systems, the procedure is the same.

System Number: By default, the software opens with system number 0 and the Eclipse systems are set to system number 0 at the factory. Unless you change that number, there will be an automatic connection. If you have several Eclipse systems connected to your computer, each system will have to be programmed with a different system number to differentiate it from the others. Each system will have to be created in the software.

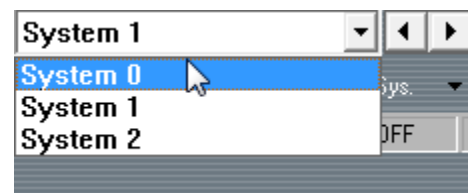
- Click on **Network** and then **Add new System**.
- Select the system model.
- Enter the system number to be added.
- Click on **OK**.
- The main window changes automatically to show the new system.
- Repeat for each system connected to the computer.



Select Com Port: You have to choose the serial port on your computer used to communicate with the Eclipse system as mentioned previously. A port that is not available will not be accepted. Use Windows Com port configuration unless you want to change the baud rate. Make sure the same baud rate is programmed on all Eclipse systems.

Verifying the communication

- The first time, we recommend verifying each system separately using **Read this Sys...**
- When all systems have responded, you may use the function **Read All Sys...**



PART 4: SYSTEM CONFIGURATION

Liquor Manager ID + uses a database called **Tags Database**. When you install the software for the first time on your computer, the database is empty. If you wish to start with a brand new system configuration, you can start it now. If you want to install the basic configuration supplied with the software, we offer a list of drinks normally dispensed in a bar and a system configuration where the products are classified in alphabetical order. The files are in **C: or D: /LIQUOR MANAGER INSTALL DISK/SETUP FILES**.

There are two available files: **Oz** (ounce) and **CL** (centilitre)

Use the files that are in **Oz** if you make a configuration using ounces as the unit of measure. Use the files that are in **CL** if you make a configuration using centilitres as the unit of measure.

Each of the files contains:

- A complete list of products.
- A system configuration classified in alphabetical order.
- The products are grouped together by viscosity order.
- The viscosity coefficients, the price fields and pour timers are pre-programmed.

IMPORTING THE DATA BASE

- Click on **Network** and **System Window**.
- Click on the red padlock at the top right of the screen.
- Enter your password to open it.
- Click on **Utilities** and **Import Tags Database**.
- Enter the path leading to **C or D:/LIQUOR MANAGER INSTALL DISK/SETUP FILES/OZ or CL**.
- Select the file **Product.cfg** and click on **OK**.

IMPORTING THE VISCOSITY COEFFICIENTS

- Click on **Utilities** and **Import Viscosity Coefficients list**
- Enter the path leading to **C or D:/LIQUOR MANAGER INSTALL DISK/SETUP FILES/OZ or CL**.
- Select the file **Coeff.cfg** and click on **OK**.
- Click on **NO** when the system asks you if you want to reprogram the timers.

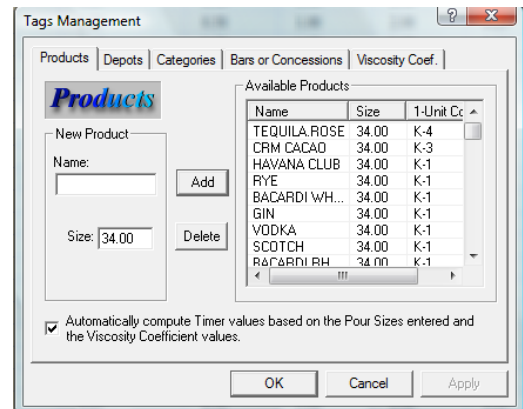
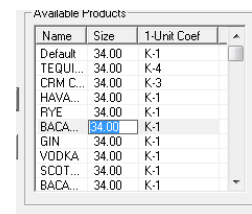
IMPORTING THE MASTER1 CONFIGURATION

- Click on **Utilities, Configurations, Configuration Management** and **Load User Configuration File**.
- Enter the path leading to **C or D:/LIQUOR MANAGER INSTALL DISK/SETUP FILES/OZ or CL**.
- Select the file **Master1OZ.cfg or Master1CL.cfg**.
- Click on **Open**.
- The Master1 configuration appears on the screen.

Editing the database

Add/Edit a product

- Click on the **Tags** icon.
- Enter a new name or description in the text editor. Press on **Enter** or click on **Add** to add it to the list.
- To modify a bottle size, put the cursor on the corresponding box and click on the right button on the mouse. Enter the new value and press Enter to save it.

Name	Size	1-Unit Coef
Default	34.00	K-1
TEQUILA ROSE	34.00	K-4
CRM CACAO	34.00	K-3
HAVANA CLUB	34.00	K-1
RYE	34.00	K-1
BACARDI WH...	34.00	K-1
GIN	34.00	K-1
VODKA	34.00	K-1
SCOTCH	34.00	K-1
BACARDI RH	34.00	K-1

Note: The display on the Eclipse limits the product name to 8 characters. Use abbreviations so that the product name can be easily recognizable on the display of the Eclipse system.

Delete a product: Before deleting a tag, make sure it is not assigned to any other pourer.

- Click on the **Tags** icon
- Select the product. Press on **Delete**

Bar/Concession: Use to identify a bar or a location. You will assign the Eclipse system to that location for the report printing. You can choose any name but it cannot exceed 24 characters.

Depot: Use it to identify the depot or the storeroom where bottles are kept for the bar where the Eclipse system is installed. You can choose any name but it cannot exceed 24 characters.

Category: You can create and assign a category to regroup similar products on the reports. You can choose any name but it cannot exceed 20 characters.

Coefficients: There are 10 available coefficients. A coefficient of 33 indicates that it takes a timer of 33 to serve 1 ounce with a product that has that viscosity. The viscosity coefficient depends also on the kind of pourer used. In the case of CL, the coefficient value changes since the base measure changes from 1 ounce to 1 CL. Each product needs to have a viscosity coefficient. If you change the viscosity coefficient, the software recalculates all the timers of all the related products. You have to reprogram them in the system.

- To assign a viscosity coefficient to your new product, put the cursor on the corresponding box and click on the right button on the mouse. Select the coefficient and press on **Enter** to save.
 1. K1= Regular
 2. K2= Half sweet
 3. K3= Sweet
 4. K4= Creams
 5. K10= Blue pourer for wine (in oz mode only)

The viscosity coefficients are used by the software to calculate the timer values according to the quantities in the SIZE columns intended for that purpose. You don't have to program the coefficients in the system unless you're thinking of using the Veloce Brand ID (5) interface. Tick off the **Automatically compute Timer values...** box. If you wish to manually enter the timer values, simply remove the tick.

Manual adjustment for wine: The timer for the blue pourer has to be set at 100 manually in order to get a 15 cl. glass in CL mode.

Delete/Edit Tags: Select the product or the tag that you want to delete and click on **Delete**. If you edit a tag, any change made in the database will automatically be reflected in the systems' configuration.

Selecting/unselecting lines: To select a line, **click on it once. Click a second time to unselect**. To select or unselect a group of consecutive lines, click on the first line of the group, press down the **Shift** button and click on the last line of the group.

- To select all the lines, click on the **Select** icon.
- To undo line selection click on the **Unselect** icon.
- To reverse line selection click on the **RevSel** icon.

Assigning the products to the pourers: When you make a system configuration, it is preferable to use the Set Tags function.

- Click on the **Set Tag** button. The TAG ASSIGN dialogue box showing the tag list in alphabetical order will appear.
- Select the Products, Bars/Concessions, Depots or Category tabs to see all available data classified in alphabetical order in the database.

Assigning the products to the pourers:

- **Click on the line to select it** (in red).
- Select the product in the list.
- **Click on the line again to unselect it.**

Assigning a product using the drop-down list: With this method you don't need to select a line to assign a tag.

- Position your cursor on the product name box you want to assign and **click on the right button of the mouse.**
- Select the product in the list.

Unused pourer numbers:

You can program a larger configuration in your Eclipse system that includes products that you don't use. If you don't program pourers with those numbers they will be useless. The advantage of this option is that if you later want to add that product you will only have to program pourers with that number to make it work. Otherwise, tag pourers that you don't use with the name **Unused**.

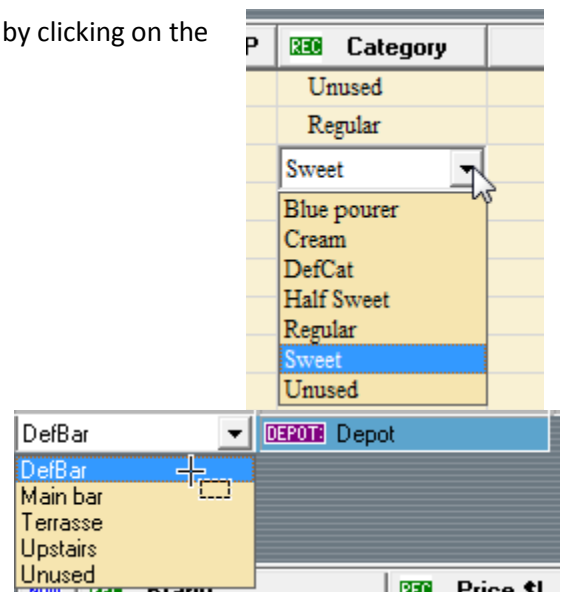
You can also assign the other tags using the Set Tags function or by clicking on the right button of the mouse on the corresponding selected box.

Assigning categories:

- Select the products corresponding to that category.
- Click on the right button on the Category column.
- Select the category in the list.

Assigning the Bar/Depot:

- Position your cursor on the Bar/Depot window.
- Click on the right button on the window.
- Select the name in the drop-down list.



Pour size and price configuration

The viscosity coefficients are used by the software to calculate the timer values according to the quantities in the SIZE columns intended for that purpose.

The price assigned to each pour size of each product is used for the reports. The price field appears on the screen of the Eclipse system. If you do not use reports on the system or on the software, that field will not be useful to you. In that case, program the pour size value so it will be displayed on the screen of the Eclipse system.

Assigning prices :

- Select the products to which you want to assign a price.
- **Click on the right button of the mouse** on the Price S column.
- Enter the price and press on **Enter** to go to the next column.
- Repeat for all the products.
- Press on **Esc** to exit.

Assigning pour sizes :

- Select the products to which you want to assign pour sizes.
- **Click on the right button of the mouse** on the Size S column.
- Enter the pour size and press on **Enter** to go to the next column.
- Repeat for all the products.
- Press on **Esc** to exit.

Note that if you ticked off the box **Automatically compute Timer values ... The timer values change automatically according to the viscosity of the product.**

Assigning timers manually:

- Select the products to which you want to assign the Timers.
- **Click on the right button of the mouse** on the Timer S column.
- Enter the timer and press on **Enter** to go to the next column.
- Repeat for all the products.
- Press on **Esc** to exit.

Saving the Configuration File:

- Click on **Network, Configurations** and **System Configurations Management**.
- Click on **Save User Configuration File**. The dialogue box “Save System Configuration” asking you to enter the file name will appear.
- The default file name is **SysXUserCfg** where X corresponds to the system number displayed. You can use that one or enter a name like the bar name for example.
- Save it in the folder where your Liquor Manager is installed:
C: /auper/Liquor Manager/UserConfig /Myplacecfg.cfg

From now on this file will be used as the configuration file for this Eclipse system. The file name will show near the system number at the top of the system window.

Eclipse systems in RS-422 network

If you have many systems connected to your computer and you wish to use the same file for all systems:

- Click on **Utilities, System Configuration management** and **Set All systems to same configuration**.
- Click on **Yes** to continue.
- The software will ask you to update the system configuration file.
- Click on **Yes**.
- The other system configuration files **will not share the same name** but will share the same data.
- Each time you change something in the configuration file, you need to repeat these steps to save your changes in all system configuration files.

Various configurations

If you have several Eclipse systems with different configurations, use the default configuration file “SysXUserCfg”. Since you program them individually, use the **Update All user configuration files** command to save your changes.

Eclipse S3 Configuration

The S3 model is equipped with three groups of counters identified as Period 1, Period 2 and Period 3. The period change is done using the period keys on the Eclipse S3 system. When you click on **Read This Sys...** the software starts the reading of the counters and at the end of the first period a message will appear to warn you that the **configuration includes more than one period**. Click on **OK** to continue the download of the 2 other periods.

Only the prices can vary in the period configuration. The Timers and Sizes are the same.

Programming the Eclipse system

If you program one or several systems separately you have to first select the system number displayed.

- Click on **Utilities** and **Configurations**.
- Click on **Configuration Programming**.
- Click on **Current System...**

Several selections are offered depending on what you want to change. To program the system completely,

- Click on **All Settings** and **Program All Lines**.

If you are programming several systems, the same selections are available by clicking on **Entire Network**.

- Verify the configuration on the system.

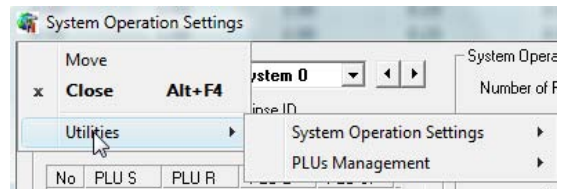
Systems Operation Settings

The **Operation Settings** window is used to modify the PLUs used when the Eclipse system is interfaced with a POS and to synchronize the computer's clock with the one on the Eclipse system if this one is a S3 model. The other displayed functions are no longer available.

- **Select the system** on which you want to work on.
- To read the PLU table, click on **Read PLUs**.
- To modify the PLUs, **click on the box with the right button of the mouse**.
- Edit the value (4 digits compulsorily).
- Press on **Enter** to change the box.
- Press on **ESC** to exit.
- Click on **Write PLUs** to program them in the system.

Saving your PLU table



- Click on the Tools icon at the top left of the screen.
- Click on **Utilities** and **PLUs Management**.
- Click on **Save System PLUs**.
- A **SysXPLu.cfg** file will be created in the file **c:/auper/Liquor Manager/userConfig**.

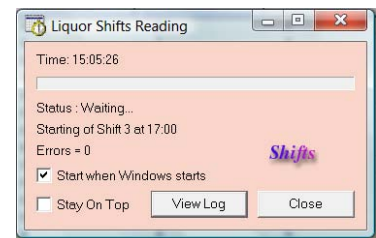
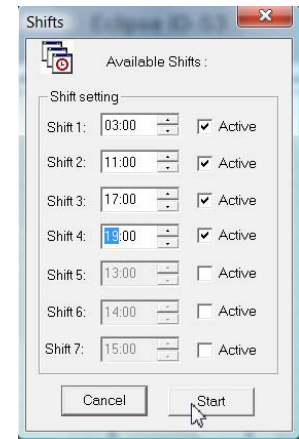


In that menu you can also reload a PLU table to reprogram it, put all your systems on the same table or reload the original PLU table.

PART 5: OPERATION

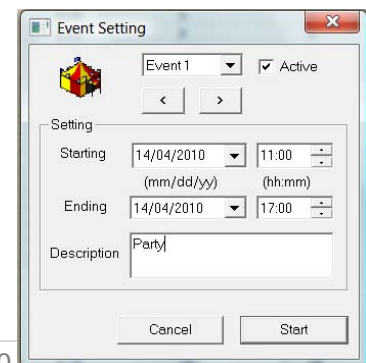
Liquor Shifts Reading: Automatic reading and saving of the counters. This program works on the background even when Liquor Manager is closed.



- Click on the **Shift** icon.
- Put a tick in the boxes corresponding to all the times you want to read and save the counters each day.
- Enter the first time starting with the earliest in the day (3 Am for example)
- Click on **Start** to start the Liquor Shift Readings program.
- Tick off the box **Start when Windows Starts** to start the program automatically when the computer is turned on.
- Click on  to minimize the program. Do not close it by clicking on . An icon will appear at the right bottom corner to indicate that the program is running.



Event Readings: This function will not be useful unless you want your software to do readings and savings at times corresponding to an event. You can program up to 7 events.

- Click on the **Event** icon.
- Put a tick in the box for each event you want to activate.
- Enter the time of the beginning and the end of the event.



- Click on **Start** to start the Event Readings program.
- Click on  to minimize the program. Do not close it by clicking on . An icon will appear at the right bottom corner to indicate that the program is running.

Record Management: there is a limit on the number of counter records on the disk. You will get a warning from the software when the file needs to be cleaned. No function is available to clear all the systems records at the same time. You will need to delete them manually on each one of your systems. Keep records at identical times and dates (time stamps) for all systems.

- Click on the **Record** button in the system window.
- The Record dialogue box showing the available records for that system will appear.
- Click on the buttons “<” or “>” to **select the system you want**.
- Keep the **Shift** key pressed down **and click on the first and last reading you want to select**.
- Click on **Delete** to clear all the entries of the readings file.
- If you have more than one system, repeat for each system.

Communication Errors

There are three possible communication errors:

1. **Time out Error:** This type of error means that Liquor Manager does not receive the entire data bundle it should receive from the Eclipse system.

Possible causes:

- The parameters of the COM port are not set properly.
- The Eclipse system does not reply because the system number does not correspond.
- The Eclipse system was stopped, disconnected or the requested system does not exist on the network.
- The serial cable is too long (change to a RS-422 cable).

2. **Checksum Error:** This error occurs when the data bundle contains an error and cannot be considered as a valid data bundle.

Possible causes:

- There is interference on the serial cable.
- The system memory is corrupted.

- Critical Communication Error:** This error occurs if Liquor Manager encounters serious problems with the internal communication functions during data transmission. In view of this type of error, Liquor Manager will stop (if necessary) any communication procedure to come. You will probably need to uninstall the software and reinstall it to fix the problem.

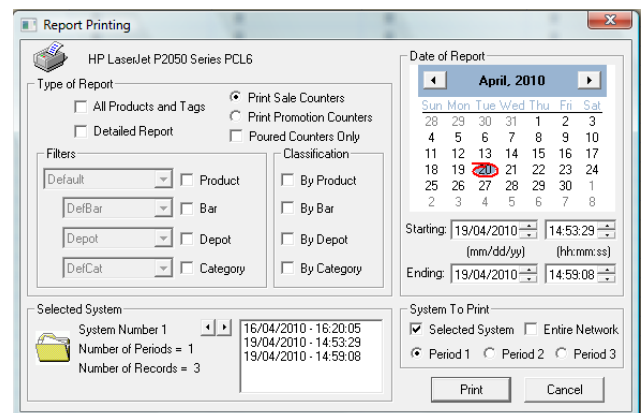
Clear the counters: If you use the software for reports and automatic conciliation do not clear the system’s counters. This function should be used only at the first startup or at a moment when you want to do a mayor cleaup of your files and counters. This action will clear the counters in the system. At the next saving, the counters will be less than those previously recorded in the file. This will generate a report with negative values on it if you print a report including data recorded before the counter clearing.

- Click on **Network** and **Show System Counters** to see the system’s counters.
- The header icon will change to **“sys”** in red.
- To select or unselect a group of counters, click on the first counter of the group, press the Shift key and click on the last counter of the group.
- Click on **Utilities** and **Clear Counters...**
- Select the counters to be cleared among the possible options.
- Liquor Manager will transmit the command to the selected Eclipse system.

Printer selection: Liquor Manager will use the default configured printer in Windows. However, if you have more than one printer (local or in a network) you may use another printer. That printer will be used each time you launch Liquor Manager.

Printing reports: You will configure your reports using Tags. The reports are generated from the counters recorded on the file. If you have more than one system, all systems on a network need to have their records at the same times and dates, otherwise a report generated with the option **Entire Network will not work**. Synchronizing the readings is not a problem if you always use the **Read all Systems** button to make your readings before saving the data.

- Click on the **Print** button. The **Report Printing** dialogue box will appear.



All Product and tags: If the box is ticked off, the report will enumerate the list of pourer numbers and products with the total served for each size.

- Tick off the box **Poured Counters Only** to only print the products that were used.
- **Select the date and time of the start of the report** from the record list.
- **Click on Ending date** and select the date and time of the end of the report.
- Select the **Selected System** option if you want a report for that specific system.
- Select the **Entire network** option to print a report for all the Eclipse systems on the network.
- Tick off the **Detailed Report** box if you want a detailed report that will include all the periods on record between the times and dates selected.
- Click on the **Print** button to print your report.

Printing a report using the filters:

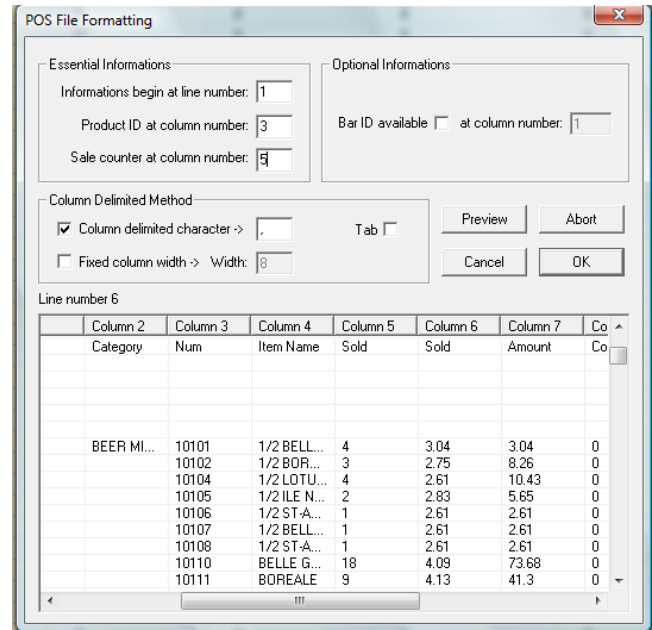
- **Remove the tick on the All Products and Tags option.**
- The left column (Filters) will allow you to select one, or a combination of, products, bar, depot or a specific category.
- The right column (classification) will allow you to select one, or a combination of, groups, like products, bar, depot and categories.
- The tags on both columns can be selected at the same time. A product for all the bars for example.

Selecting **By Bar** and **By Category** will print a report totalizing the products used by brand and sub-totalized by category for each Concession/Bar. Selecting a specific product and **By Bar** will generate a report totalizing the quantity of product for each bar. **If more than a system is assigned to the same bar, the report will total all systems.**

PART 6: SALES CONCILIATION

You can use this function if your POS can export a sales report including the item numbers sold and the amount sold in **.txt** or **.csv** format.

- Click on **Utilities, Configurations** and **POS File format configuration**.
- Click on **Preview** and select the file exported by your POS software.
- Select the **All Files** option (*.*) in the file format window to make sure to find your POS file. The extension used varies depending on the software.
- The content of the file will show in the dialog box.
- Change the delimiter if the content of the file doesn't show as columns. The delimiters are normally commas (,) or semicolons (;).
- Click on **Preview** and select your file again to view the corrected version.
- If your report has a header, count the number of lines and enter that number in the "Informations begin at line number" box to remove them.
- Click on **Preview** and select your file again to view the corrected version.
- Enter the column number of where the item numbers (PLU) in the **Products ID at column number** box
- Enter the column number of where the amounts sold are in the **Sale Counter at column number** box



Some software will have a column indicating the number of a bar or of an employee. That information has to appear on all lines to be used by the software.

Tick off the **Bar ID Available** box and enter the column number of where that information is.

- Click on **OK** to exit.

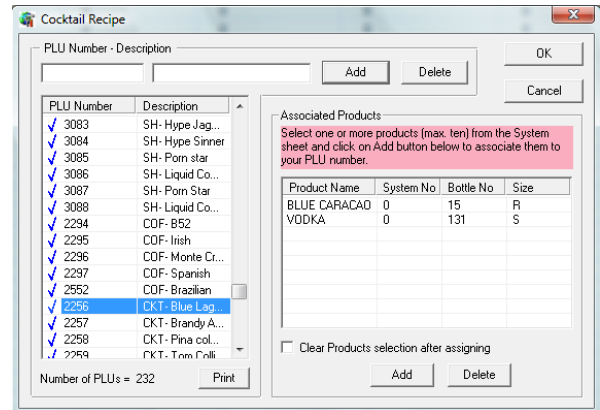
You will only need to configure the report once. Unless this one changes, the software will always remember the format.

Item programming

- Click on **Utilities, Configurations** and **POS Reconciliation Configuration**.
- Click on **PLU Configuration**.

Here is where you configure the items containing alcohol or wine that will be served by the Eclipse system. All the products that will be on the POS report have to be there.

- First tick off the **Clear Products selection after assigning** box to reset the product selection after each item programmed.
- Enter the item number (PLU) as shown on the POS report as well as a small description.
- Click on **Add**.
- Select the pourer number(s) that will be used to serve that item. Up to 10 products can be selected.
- Click on **Add** to confirm your selection.
- Position your cursor on the size to be served and click the right button of the mouse.
- Select the size (S, R, L or SP).



Product Name	System No	Bottle No	Size
TEQUILA,ROSE	0	123	S
			R
			L
			SP

Repeat for each item. An item with a blue tick is configured correctly. An item with a yellow exclamation mark has to be configured. After you finish you can print your configuration by clicking on the **Print** button.

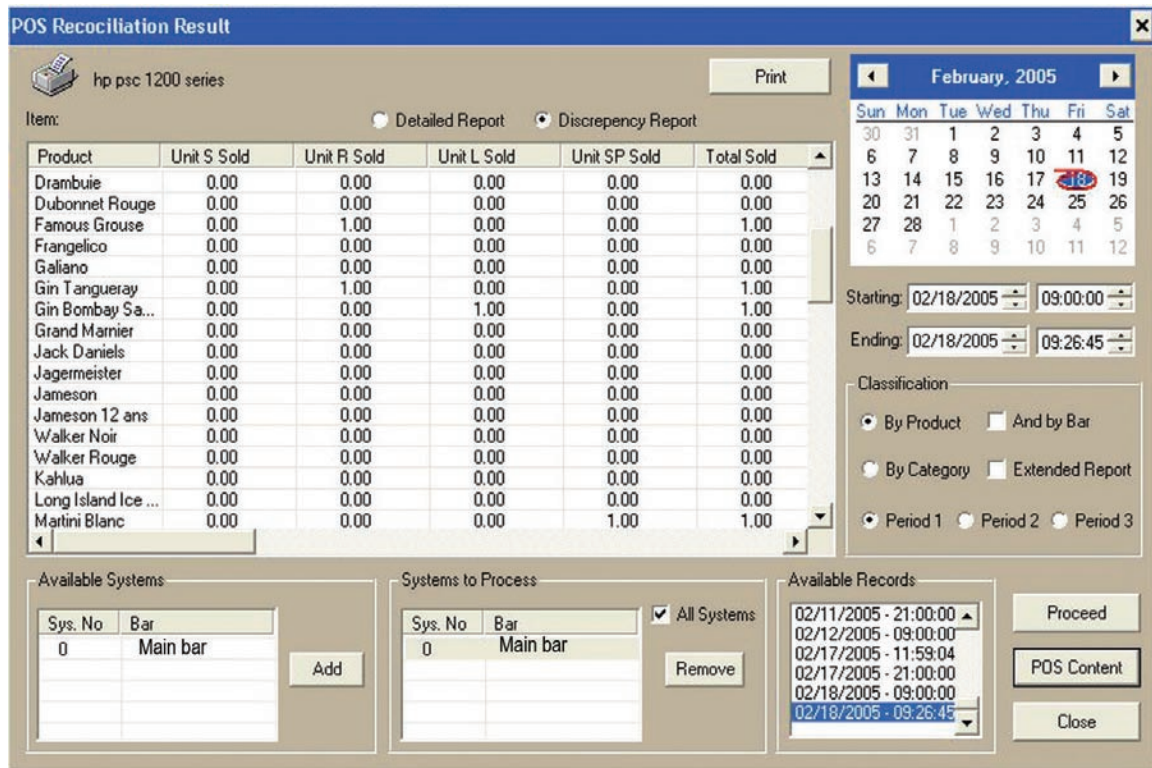
Each Eclipse system has to be assigned to a bar. You can have more than one system assigned to the same bar. The POS report configuration will show the way you group your systems to reconcile your sales. A POS report could have separate totals for each bar or section or can give you a total for all of them.

Sales Reconciliation

Most people using this function also use the AutoShift program. Counter reading and recordings are all done at the same times every day and they correspond to the periods on the sales report coming from the POS.

For example, if you reconcile the sales once a day and your Autoshift is set to 7 AM, you will take the counters of Tuesday 7 AM as the beginning of the report and those of Wednesday 7 AM as the end of the report to reconcile your Tuesday sales.

- Click on **Utilities** and **POS Reconciliation Sheet**



POS Reconciliation Result

hp psc 1200 series

Print

February, 2005

Item: Detailed Report Discrepancy Report

Product	Unit S Sold	Unit R Sold	Unit L Sold	Unit SP Sold	Total Sold
Drambuie	0.00	0.00	0.00	0.00	0.00
Dubonnet Rouge	0.00	0.00	0.00	0.00	0.00
Famous Grouse	0.00	1.00	0.00	0.00	1.00
Frangelico	0.00	0.00	0.00	0.00	0.00
Galliano	0.00	0.00	0.00	0.00	0.00
Gin Tangueray	0.00	1.00	0.00	0.00	1.00
Gin Bombay Sa...	0.00	0.00	1.00	0.00	1.00
Grand Marnier	0.00	0.00	0.00	0.00	0.00
Jack Daniels	0.00	0.00	0.00	0.00	0.00
Jagermeister	0.00	0.00	0.00	0.00	0.00
Jameson	0.00	0.00	0.00	0.00	0.00
Jameson 12 ans	0.00	0.00	0.00	0.00	0.00
Walker Noir	0.00	0.00	0.00	0.00	0.00
Walker Rouge	0.00	0.00	0.00	0.00	0.00
Kahlua	0.00	0.00	0.00	0.00	0.00
Long Island Ice ...	0.00	0.00	0.00	0.00	0.00
Martini Blanc	0.00	0.00	0.00	1.00	1.00

Starting: 02/18/2005 09:00:00

Ending: 02/18/2005 09:26:45

Classification

By Product And by Bar

By Category Extended Report

Period 1 Period 2 Period 3

Available Systems

Sys. No	Bar
0	Main bar

Add

Systems to Process

Sys. No	Bar
0	Main bar

All Systems

Remove

Available Records

- 02/11/2005 - 21:00:00
- 02/12/2005 - 09:00:00
- 02/17/2005 - 11:59:04
- 02/17/2005 - 21:00:00
- 02/18/2005 - 09:00:00
- 02/18/2005 - 09:26:45

Proceed

POS Content

Close

- Select the system(s) on which you want to reconcile the sales. Tick off **All Systems** for it to be done on all systems.
- **Select the date and time corresponding to the beginning of the report** in the **Available Records** window.
- **Click on the Ending date window.**
- **Select the date and time corresponding to the end of the report** in the **Available Records** window.
- Click on **Proceed** to transfer the selected counters to your reconciliation sheet.
- Scroll the table to the right using the arrows to be able to see the counters (Poured Counters).

POS file Scanning

- Click on the **POS Content** button.
- Click on **Load POS File**.
- **Select the POS sales file corresponding to the downloaded counters** on the POS reconciliation file.
- The POS file content will be displayed.
- Click on the **Scan** button.

- The yellow exclamation mark on the left of the table will change to a blue tick telling you the data was scanned.
- Click on the **Close** button to return to the reconciliation sheet.
- Tick off the box corresponding to the report that you want to print and click on **Print**.

If the sales file contains several shifts, you can select the file section corresponding to the period for the selected counters to conciliate sales for each period separately.

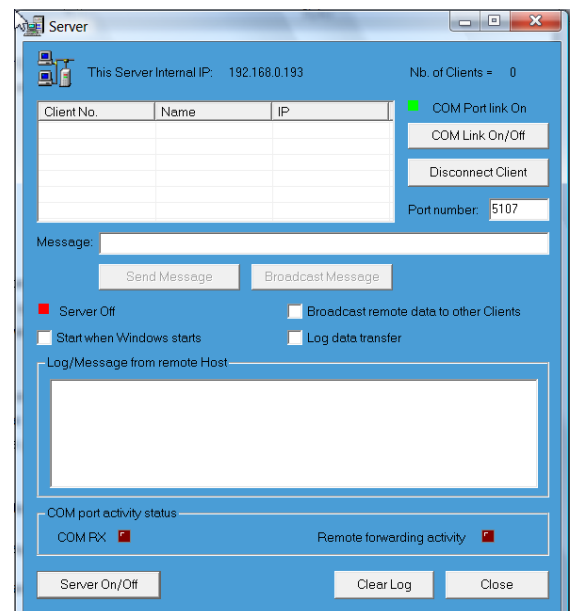
- **Click on the first line** where you want the scanning to start.
- Click on the **To line** box to indicate that the next selected line will be the last line on the scan. A red arrow will appear at the right side of that box.
- **Click on the last line of the scan.**
- Click on the **Scan** button. The selected lines corresponding to the selected period will have blue tick on the left showing you they were scan with success.

The Discrepancy Report will only identify the products where there is a difference between the sales and the counters and the Detailed Report will show a complete report.

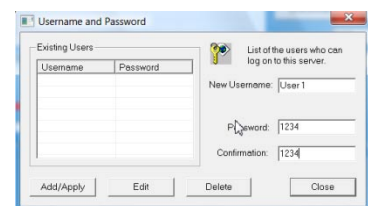
PART 7: ADVANCED FUNCTIONS

Remote Access Utilities

The Server and Client modules allow you to use the Liquor Manager software on a computer network (POS) where there is one or several Eclipse systems (connected in RS-422), connected to another computer on the network. The computer used to manage the systems with Liquor Manager can't be connected to an Eclipse system in this configuration. You will necessarily have to install the Liquor Manager software on both computers to first establish that the communication with the systems works and to install the Server/Client modules.

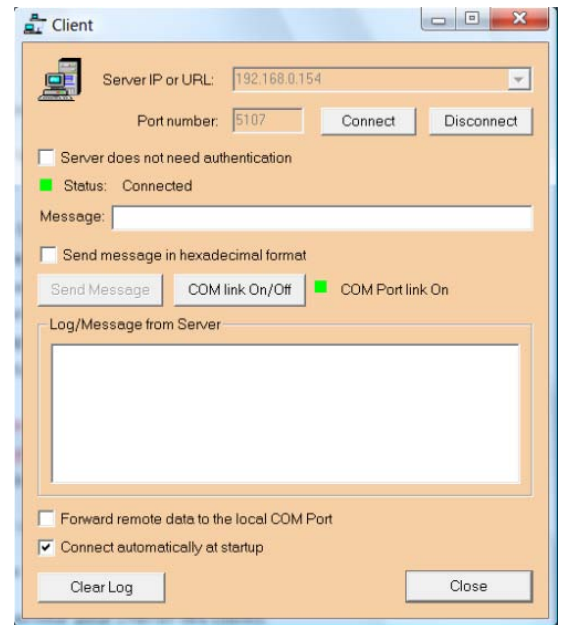


Server: The Server module is the master and manages the communications. You will install that module on the computer that is connected to the Eclipse system(s). Before starting the Server, you must first have connected your Eclipse system to the computer, selected the serial port and successfully communicated with the system using the software (Read This Sys...). **If the server is installed on a POS terminal, make sure there is no conflict with the serial port used.**



When you open the Server, the computer's IP address is displayed. Take note of the IP address because you will need it later.

- **COM Link On/Off:** It's the bridge between your Eclipse system and the network. Turn it **ON**.
- **Port Number:** By default it is at 5107. Your network administrator could decide on another one.
- **Click on the Server icon** at the top of the page.
- Click on **Users list** to create a user account.
- Enter a user name and a password.
- Click on **Add/Apply**.
- Click on **Server On/Off** to activate the server. The Server light will turn green to show that the server is activated.
- Tick off the « **Start when Windows starts** » box so that the server reactivates automatically when you turn on the computer.



Client: On the other computer that is not connected to an Eclipse system, open the Client module.

Important: A valid COM port is necessary on the host computer to operate the Client module even if there is no system connected to it.

- Enter the server's IP address in the Server IP or URL box
- Click on **Connect**. Enter the user name and the password.
- You might have to return to the Server to authorize the connection when Windows Firewall will ask you to.
- The **Status** light will turn green to show that you are connected.
- Tick off the **Connect automatically at startup** box to turn on the Client module when you turn on the computer.
- **Do not tick off** the **Forward remote data to local COM port**.
- Tick off the **Reconnect if connection lost** box so that the client reconnects automatically to the server if the connection is interrupted.

If you had entered an IP address for a server that is no longer in use:

- Select the unused server address in the Server IP box
- Click on the Client box at the top of the page
- Click on **Delete Current URL**

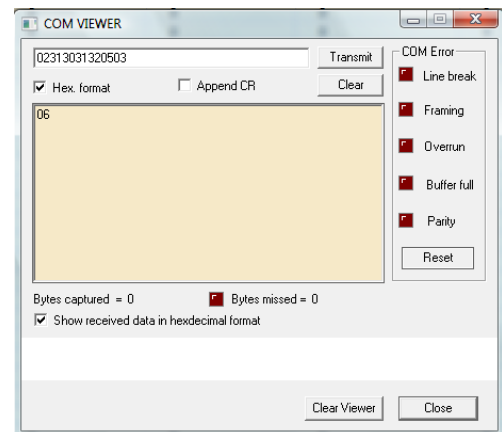
You should be able to communicate with the Eclipse system connected to the server.

Connection Loss: The server should restart automatically as soon as the computer is restarted. If there should be a connection loss between the server and the client, the client will only try once to reconnect automatically. If that fails, you will have to click on **Connect** to re-establish the link with the server. If you use the server/client modules with the Autosoft program, it is not guaranteed that the communication will always work since it depends of your router and the network. So you will have to regularly verify the connection status to make sure that the program works. If you use the system to take readings and manual programming, you may close the client and open it again when you want to communicate with your system and you will not have that problem.

COM VIEWER program

The COM VIEWER program is available by clicking on the grey box identifying the No.1 pourer on the left side of your Liquor Manager screen. This program enables you to manually test serial communications. It is an advanced tool for dealers and programmers that wish to test the POS interfaces to make sure of the good operation of the Eclipse system, the cables or the POS.

A good knowledge of the interface communication protocol, of ASCII codes, of Checksum computation or LRC, etc... is necessary to use this tool.



With this tool on your portable computer, you can replace the Eclipse system in the communication with the POS terminal and vice versa in order to verify the good operation of the interchange.