



Maitre'D Certification

Auper Eclipse 784

Liquor Control Device

Document version 1.00

Table of Contents

Table of Contents	2
Features	3
Auper Eclipse 784	3
Metal ring pourers.....	4
Eclipse 784 device setup	5
Maitre'D Setup	6
Server Control / View / Options / Bar	6
Point of Sale Control / Workstation / Options / [WS#xx] / Devices.....	8
Point of Sale Control / Employees / Employees / [Empl. Name].....	9
PLUs.....	10
Point of Sale Control / Revenue Center / PLU... ..	11
Point of Sale Control / Revenue Center / Items Setup.....	12

Features

Auper Eclipse 784



- Superior power to open pourers
- Up to 7 price levels and 4 sizes, for a total of 28 PLUs.
- Integrated pour spout unblocking device
- Pourer code on display before serving
- Manage by period, price level or bartender (S3)
- Very clear display
- Illuminated buttons
- Serial report printing
- POS interface
- Up to 100 systems to the same PC

Metal ring pourers



There are 7 different pourers, one for each price level. These pourers are 100% compatible with the Berg device, so both the pourers and the Eclipse 784 device can be used as replacements for an existing Berg installation.

This means that you could purchase an Eclipse 784 to replace a defective Berg device, while keeping existing pourers. The opposite is also true. You can purchase pourers from Auper, and they will work with an existing Berg device.

Eclipse 784 device setup

PLUs

The Auper Eclipse 784 supports up to 7 different price levels which can be programmed on the same device. Each price level can have up to 4 sizes. This means up to 28 PLUs (7 price levels X 4 sizes) can be programmed in the device. Please review the manufacturer's documentation for a complete PLU table.

POS Interface

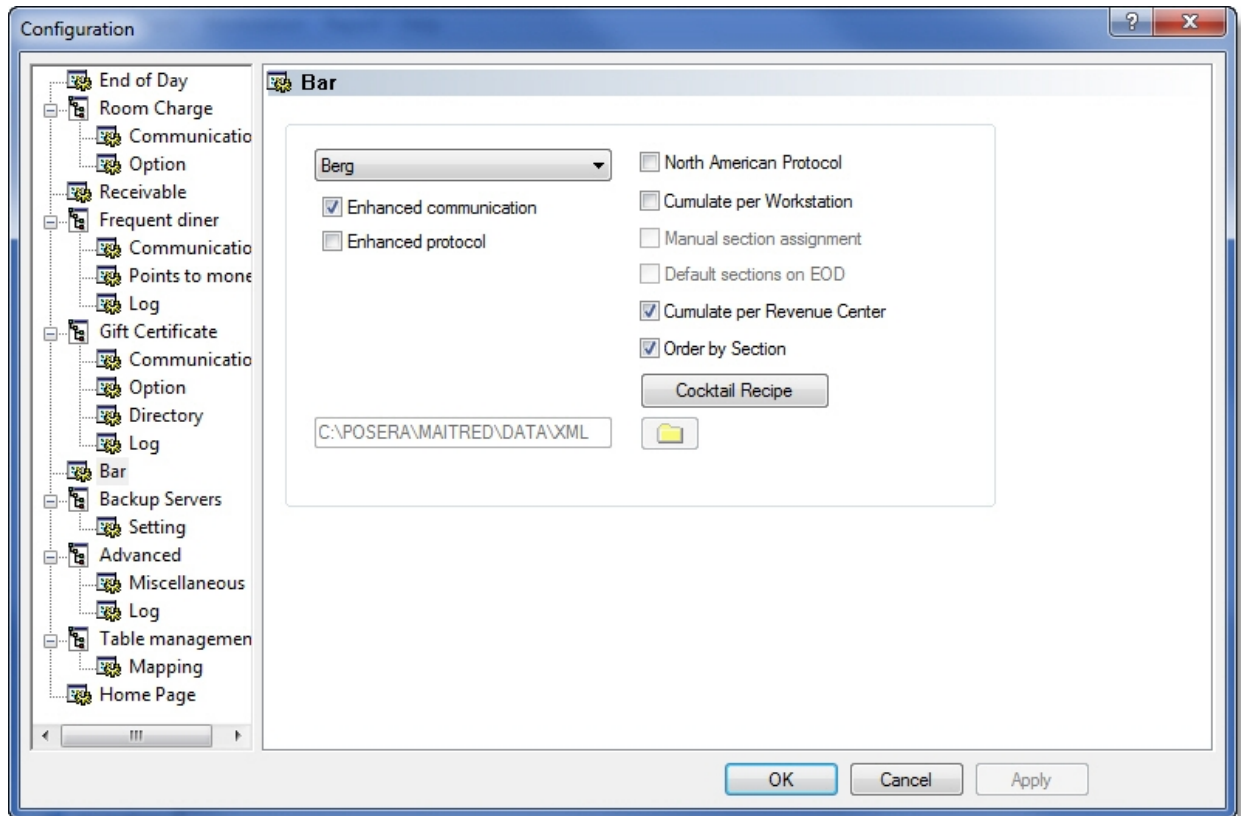
The Auper Eclipse 784 device needs to be set to **POS Enabled = 1**. This is a setting that needs to be set in the device itself. Please review the manufacturer's documentation for the complete procedure.

Baud Rate

The baud rate of the serial (RS-232) interface needs to be set to **2400 Bps** on the Eclipse 784 device in order to comply with the Maitre'D Berg interface. Also, the serial port on the PC needs to be configured to 2400 Bps as well. Please review the manufacturer's documentation for the complete procedure, and your Windows documentation for serial port settings.

Maitre'D Setup

Server Control / View / Options / Bar



Interface

Select **Berg** from the interface drop-down list. The Eclipse 784 device is fully compatible with the Berg protocol.

Enhanced Communication

Enable this option for better performance in free pour mode. This option needs to be disabled if North American Protocol is in use.

Enhanced Protocol

Disable this option. This option is not compatible with the Berg protocol.

North American Protocol

Enable this option to force servers to order drinks on the POS before they can pour. Disable this option to use free pour mode. Note that this option is not compatible with **Enhanced Communication**. The Enhanced communication option needs to be disabled when using North American Protocol.

Cumulate per Workstation

Enable this option to cumulate transactions by workstation instead of by bar operator. When used, if the manager asks for a bar interface report, the information is consolidated by workstation.

Manual Section Assignment

This option becomes available only if **Cumulate per Workstation** is also enabled. It allows managers to manually assign bar sections at the workstation to override section settings from the Back-Office.

Default Sections on EOD

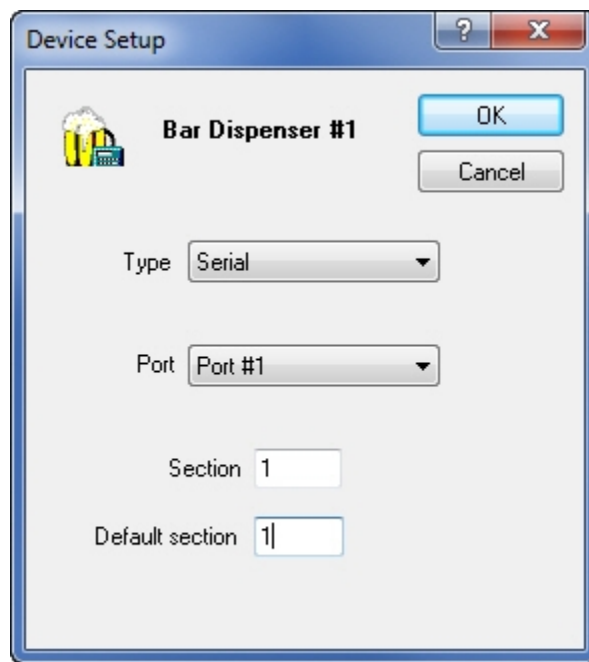
This option becomes available only if **Cumulate per Workstation** is also enabled. When enabled, this option will force section assignment to be reset to their default values during the End of Day process.

Cumulate per Revenue Center

Enable this option to cumulate transactions by Revenue Center instead of by bar operator or per Workstation. When used, if the manager asks for a bar interface report, the information is consolidated by Revenue Center.

Order by section

Enable this option to cumulate orders from different workstations in the same section to a unique dispenser. To use this option with the Berg interface, you must also select the **Cumulate per Workstation** option. Then, within the Devices Branch of every workstation in the same section other than the workstation where the bar dispenser is physically connected and defined, you must assign the same section as the bar dispenser workstation, setting the port line to Null.

Point of Sale Control / Workstation / Options / [WS#xx] / Devices**Type**

Choose the connection type from the drop down list. For the Eclipse 784, this needs to be set to **Serial**.

Port

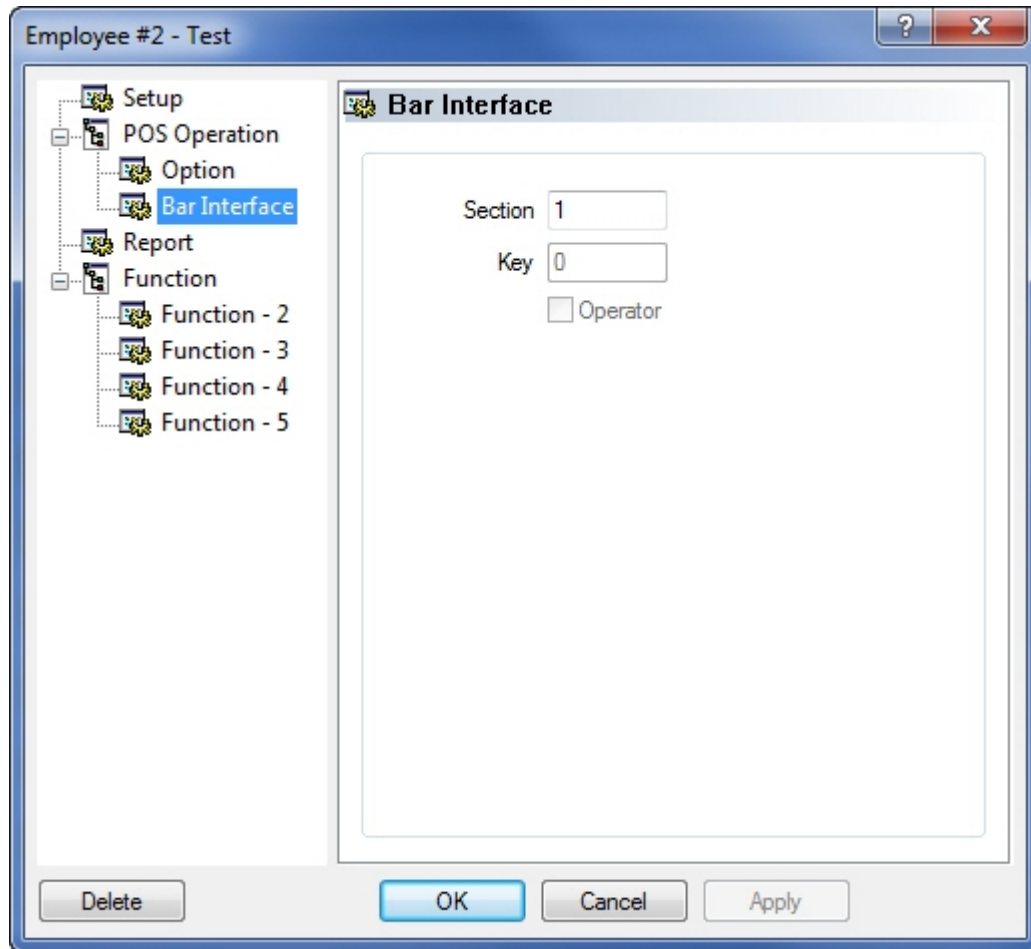
Choose the port number on which your Eclipse 784 is connected.

Section

Type a section number for this bar dispenser. This value can be overridden by the manual section assignment done at the workstation.

Default section

Type the section number to default back to at End of Day.

Point of Sale Control / Employees / Employees / [Empl. Name]**Bar Interface****Section**

Assign a bar interface section to this employee.

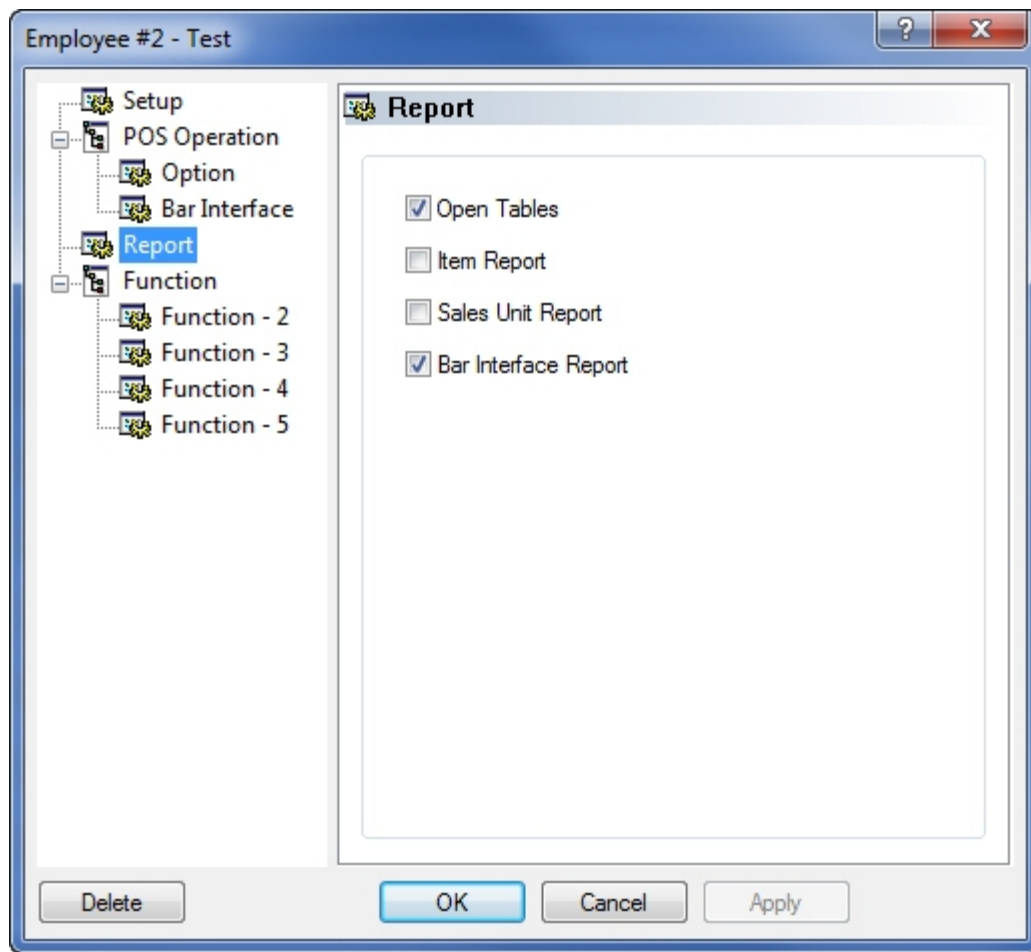
Key

This field is not available for the Berg Interface.

Operator

This option is not available for the Berg interface.

Report



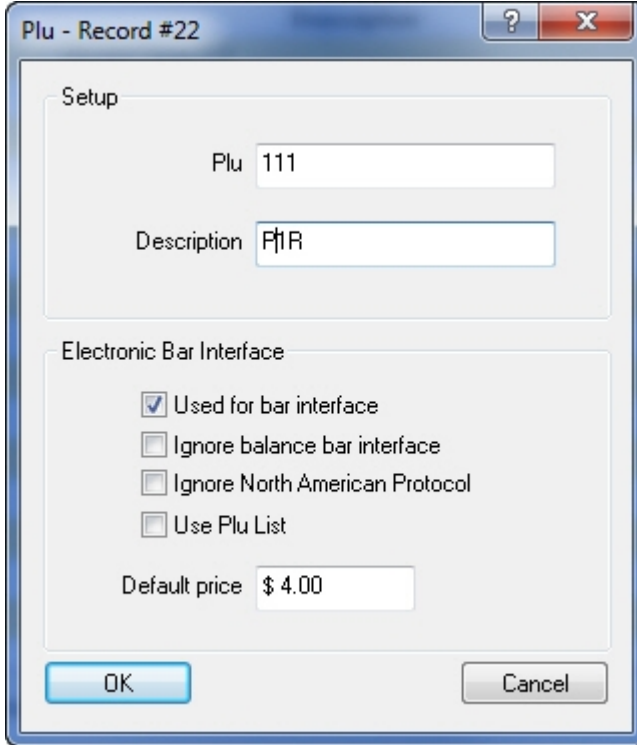
Bar interface Report

The Bar Interface Report allows employees to see how many drinks have been ordered and how many have been poured. This option is not required to use the interface. It is only required if you want this employee to be able to pull the bar interface report.

PLUs

To know the PLU numbers to use, please consult Auper's documentation related to the Eclipse 784. In Maitre'D, create PLUs as follows:

Point of Sale Control / Revenue Center / PLU...



Plu - Record #22

Setup

Plu 111

Description FIR

Electronic Bar Interface

Used for bar interface

Ignore balance bar interface

Ignore North American Protocol

Use Plu List

Default price \$ 4.00

OK Cancel

Plu

Assign a PLU number. These numbers come from the PLU table provided in Auper's documentation related to the Eclipse 784.

Description

Type a description of your choice. Since the Eclipse 784 supports only 7 price levels, you should type a generic description, since that PLU will be used on multiple items.

Electronic Bar Interface

Used for bar interface

Enable this option so that this PLU is registered by the Maitre'D Bar interface.

Ignore balance bar interface

Not used with the Berg interface.

Ignore North American Protocol

Enable this option to override the North American Protocol for this PLU.

Use PLU List

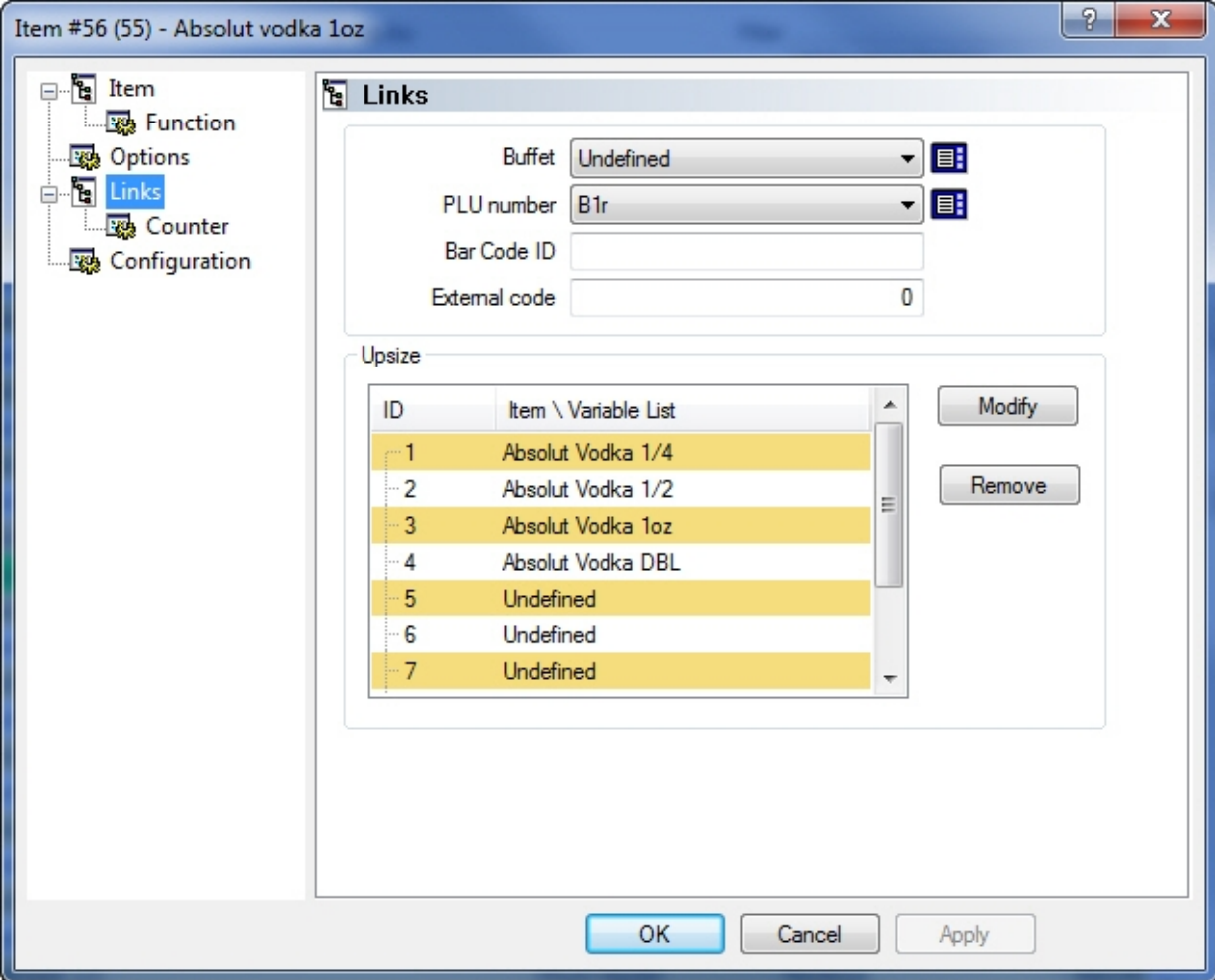
Enable this option for cocktail recipes. Not to be used to sell a single product.

Default Price

Not used with the Berg interface.

Point of Sale Control / Revenue Center / Items Setup...

Links



Item #56 (55) - Absolut vodka 1oz

Links

Buffet: Undefined
 PLU number: B1r
 Bar Code ID:
 External code: 0

Upsize

ID	Item \ Variable List
1	Absolut Vodka 1/4
2	Absolut Vodka 1/2
3	Absolut Vodka 1oz
4	Absolut Vodka DBL
5	Undefined
6	Undefined
7	Undefined

Buttons: Modify, Remove, OK, Cancel, Apply

PLU Number

Select the PLU you want to assign to this sales item from the drop-down list.