



Maitre'D Certification

Auper Eclipse ID

Liquor Control Device

Document version 1.00

Table of Contents

Table of Contents	2
Features	3
Auper Eclipse ID.....	3
RF ID Pourers.....	4
Eclipse ID device setup	5
Maitre'D Setup	6
Server Control / View / Options / Bar	6
Point of Sale Control / Workstation / Options / [WS#xx] / Devices.....	8
Point of Sale Control / Employees / Employees / [Empl. Name].....	9
PLUs.....	10
Point of Sale Control / Revenue Center / PLU... ..	11
Point of Sale Control / Revenue Center / Items Setup.....	12

Features

Auper Eclipse ID



- Superior power to open pourers
- Up to 256 brands with programmable pourers
- Integrated pour spout unblocking device
- Pourer information on display before serving
- Manage by period, price level or bartender (S3)
- Products classified by viscosity
- Increased pour size accuracy
- Very clear display
- Illuminated buttons
- Serial report printing
- POS interface
- Liquor Manager ID+ software with POS sales reconciliation interface
- Up to 100 systems to the same PC

RF ID Pourers



RF ID pourers don't have any metal rings. Instead, they carry an embedded RF ID microchip that can be programmed as required. This gives more flexibility to the Eclipse ID by allowing up to 256 different brands to be programmed on one single device. This means that instead of using only 7 price levels to be used on various brands, each brand can have its own unique PLU and pourer, specially programmed for it.

Eclipse ID device setup

PLUs

The Auper Eclipse ID supports up to 256 different brands which can be programmed on the same device. Each brand can have up to 4 sizes / price levels. This means up to 1024 PLUs (256 brands X 4 sizes) can be programmed in the device. Please review the manufacturer's documentation for a complete PLU table.

Programmable pourers

Each pourer can be programmed with a specific brand. Please review the manufacturer's documentation for the complete procedure. This needs to be done before the device can be used with Maitre'D.

POS Interface

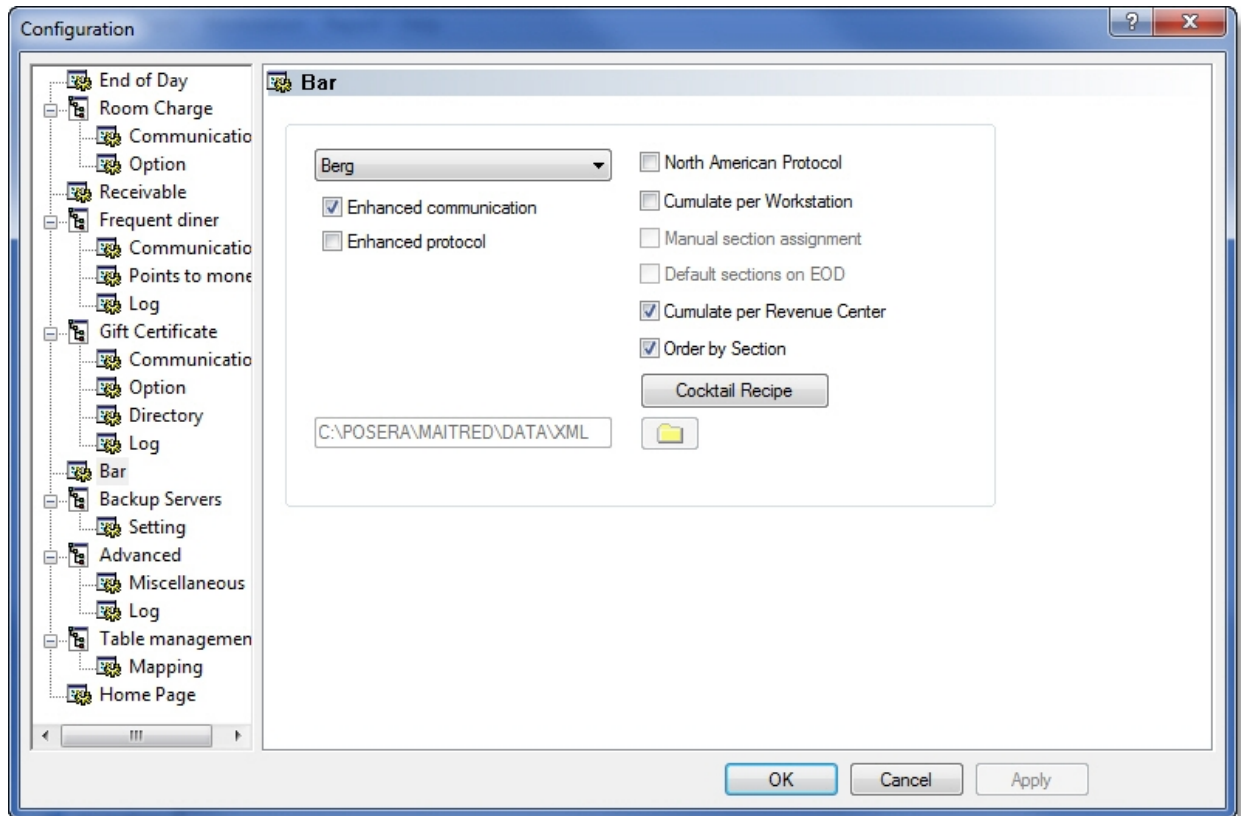
The Auper Eclipse ID device needs to be set to **POS Enabled = 1**. This is a setting that needs to be set in the device itself. Please review the manufacturer's documentation for the complete procedure.

Baud Rate

The baud rate of the serial (RS-232) interface needs to be set to **2400 Bps** on the Eclipse ID device in order to comply with the Maitre'D Berg interface. Also, the serial port on the PC needs to be configured to 2400 Bps as well. Please review the manufacturer's documentation for the complete procedure, and your Windows documentation for serial port settings.

Maitre'D Setup

Server Control / View / Options / Bar



Interface

Select **Berg** from the interface drop-down list. The Eclipse ID device is fully compatible with the Berg protocol.

Enhanced Communication

Enable this option for better performance in free pour mode. This option needs to be disabled if North American Protocol is in use.

Enhanced Protocol

Disable this option. This option is not compatible with the Berg protocol.

North American Protocol

Enable this option to force servers to order drinks on the POS before they can pour. Disable this option to use free pour mode. Note that this option is not compatible with **Enhanced Communication**. The Enhanced communication option needs to be disabled when using North American Protocol.

Cumulate per Workstation

Enable this option to cumulate transactions by workstation instead of by bar operator. When used, if the manager asks for a bar interface report, the information is consolidated by workstation.

Manual Section Assignment

This option becomes available only if **Cumulate per Workstation** is also enabled. It allows managers to manually assign bar sections at the workstation to override section settings from the Back-Office.

Default Sections on EOD

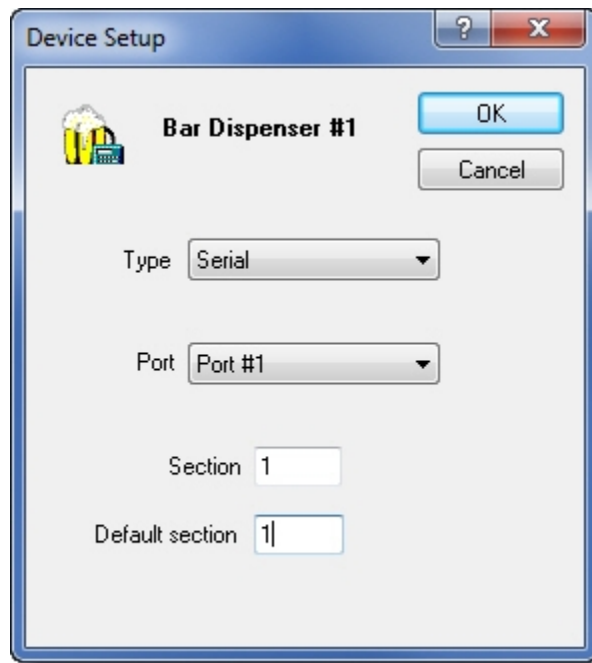
This option becomes available only if **Cumulate per Workstation** is also enabled. When enabled, this option will force section assignment to be reset to their default values during the End of Day process.

Cumulate per Revenue Center

Enable this option to cumulate transactions by Revenue Center instead of by bar operator or per Workstation. When used, if the manager asks for a bar interface report, the information is consolidated by Revenue Center.

Order by section

Enable this option to cumulate orders from different workstations in the same section to a unique dispenser. To use this option with the Berg interface, you must also select the **Cumulate per Workstation** option. Then, within the Devices Branch of every workstation in the same section other than the workstation where the bar dispenser is physically connected and defined, you must assign the same section as the bar dispenser workstation, setting the port line to Null.

Point of Sale Control / Workstation / Options / [WS#xx] / Devices**Type**

Choose the connection type from the drop down list. For the Eclipse ID, this needs to be set to **Serial**.

Port

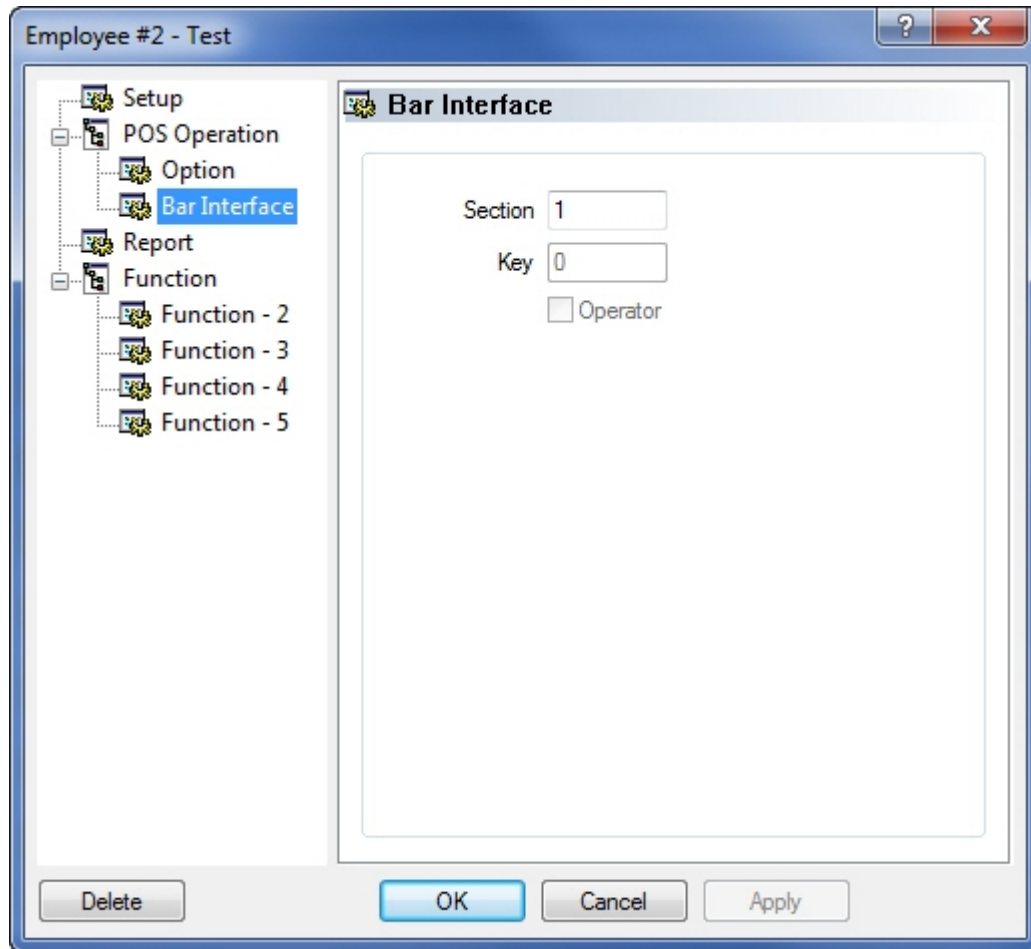
Choose the port number on which your Eclipse ID is connected.

Section

Type a section number for this bar dispenser. This value can be overridden by the manual section assignment done at the workstation.

Default section

Type the section number to default back to at End of Day.

Point of Sale Control / Employees / Employees / [Empl. Name]**Bar Interface****Section**

Assign a bar interface section to this employee.

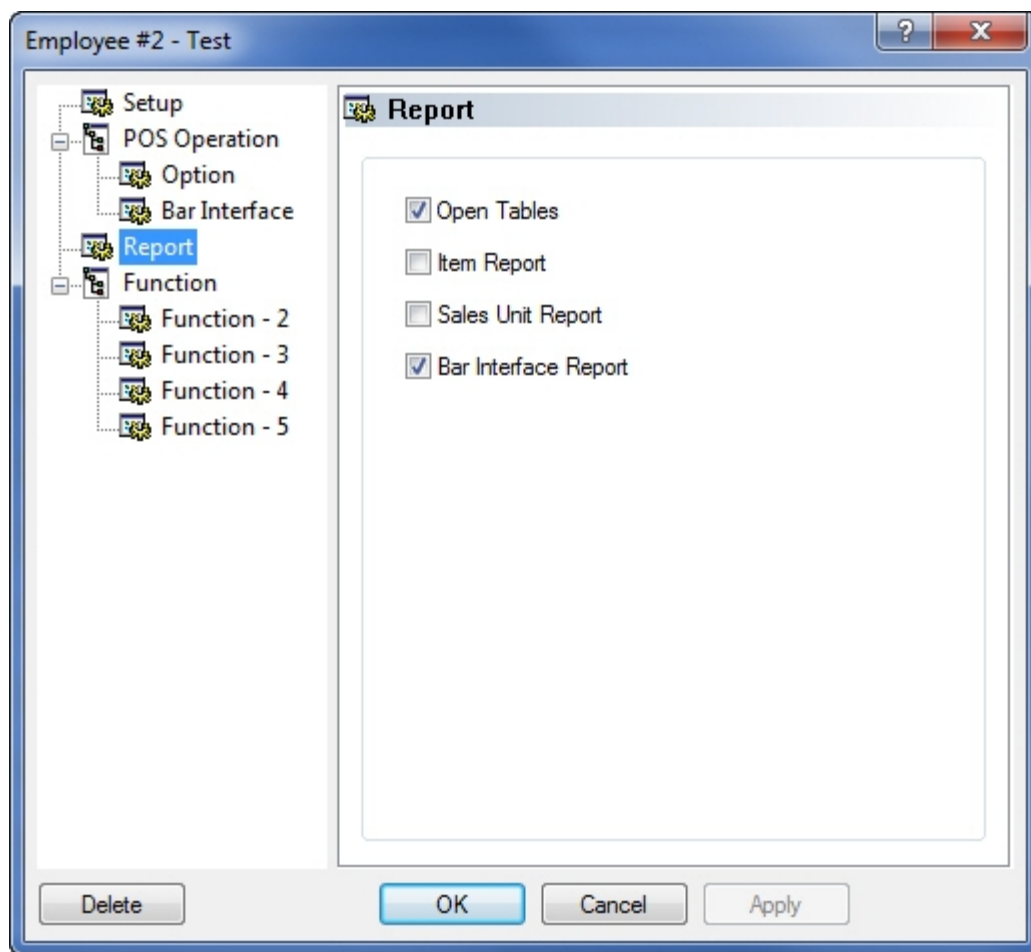
Key

This field is not available for the Berg Interface.

Operator

This option is not available for the Berg interface.

Report

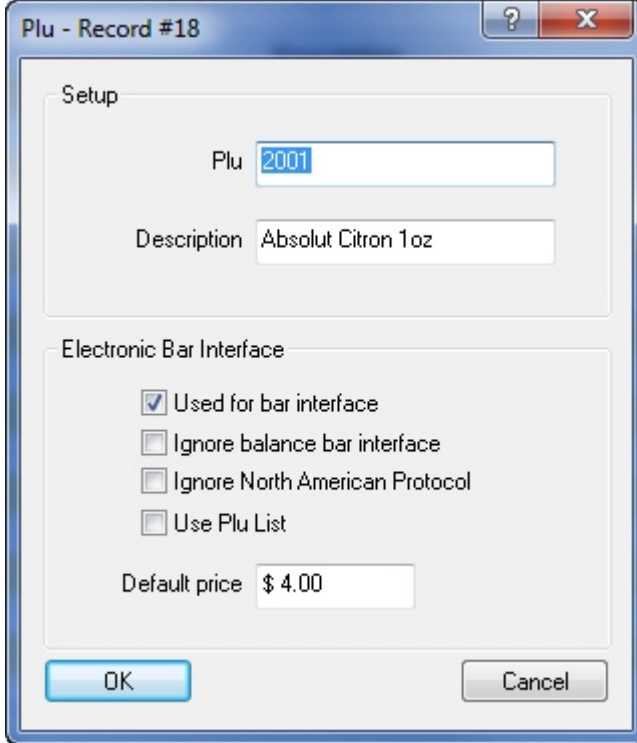


Bar interface Report

The Bar Interface Report allows employees to see how many drinks have been ordered and how many have been poured. This option is not required to use the interface. It is only required if you want this employee to be able to pull the bar interface report.

PLUs

To know the PLU numbers to use, please consult Auper's documentation related to the Eclipse ID. In Maitre'D, create PLUs as follows:

Point of Sale Control / Revenue Center / PLU...

Plu - Record #18

Setup

Plu 2001

Description Absolut Citron 1oz

Electronic Bar Interface

Used for bar interface

Ignore balance bar interface

Ignore North American Protocol

Use Plu List

Default price \$ 4.00

OK Cancel

Plu

Assign a PLU number. These numbers come from the PLU table provided in Auper's documentation related to the Eclipse ID.

Description

Type a description of your choice. Since the Eclipse ID supports up to 255 brands, you can enter the actual product that is assigned to this PLU.

Electronic Bar Interface**Used for bar interface**

Enable this option so that this PLU is registered by the Maitre'D Bar interface.

Ignore balance bar interface

Not used with the Berg interface.

Ignore North American Protocol

Enable this option to override the North American Protocol for this PLU.

Use PLU List

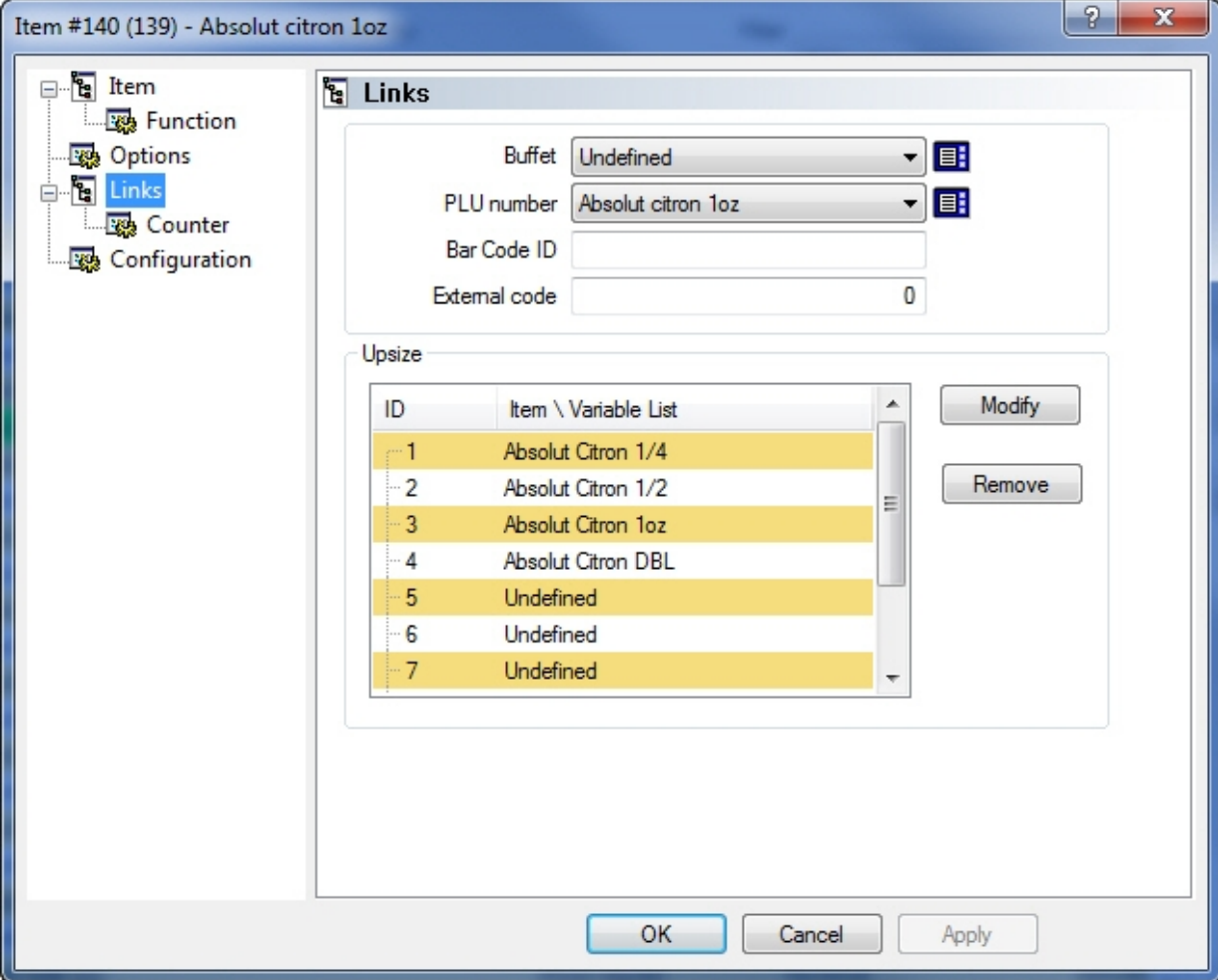
Enable this option for cocktail recipes. Not to be used to sell a single product.

Default Price

Not used with the Berg interface.

Point of Sale Control / Revenue Center / Items Setup...

Links



Item #140 (139) - Absolut citron 1oz

Links

Buffet: Undefined

PLU number: Absolut citron 1oz

Bar Code ID:

External code: 0

Upsize

ID	Item \ Variable List
1	Absolut Citron 1/4
2	Absolut Citron 1/2
3	Absolut Citron 1oz
4	Absolut Citron DBL
5	Undefined
6	Undefined
7	Undefined

Modify

Remove

OK Cancel Apply

PLU Number

Select the PLU you want to assign to this sales item from the drop-down list.