

Automatic Draft Tap

Portion control draft faucet

DESCRIPTION

The Automatic Draft Tap (ADT) is a Perlick 630SS motorized beer faucet controlled by an internal CPU. Up to four pour sizes can be pre-set to dispense the amount of draft beer or wine you wish to serve in your different glass sizes. The foam button is set to open the tap partially to make beer foam.

The Draft Tap can operate with the serving sizes set by the amount of time the faucet is held open or, with an optional Auper flow meter to insure accurate serving sizes in all conditions.

Pressing one of four pour size buttons will open the beer faucet to dispense the product. The faucet will close automatically when the pre-set quantity is reached. The foam button can be pressed to add foam to top off the beer glass when needed. Each pour size and the foam button has a counter that will advance 1 each time a pour size is served.

The manager can read the counters at the end of a shift and reset them to zero at the start of a new shift using a programmable pass code.



Specifications:

630SS faucet: The seat forward design of the faucet is a good choice for a motorized beer tap because its internal parts are not exposed to air. The faucet will not become sticky if the tap is not used for several days. The tubing can be cleaned and sanitized with the faucet in place. With the chemicals used, the inside of the faucet becomes sparkling clean.

Power: 6 volts DC @ 2 Amps or more. DC Plug: 2.1mm x 5.5mm barrel

Cable length: 2 M / 6 Ft

Faucet thread: 1"1/8 BSP

Material: Anodized aluminum enclosure, Carbon fibre injected Nylon faucet holder.

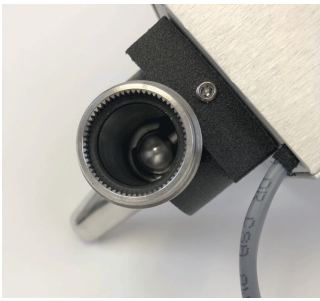
Line cleaning mode: If enabled, a pass code can be used to enter the cleaning mode for manual opening and closing of the beer tap.

Pause mode: If enabled, it allows the bartender to pause a pour to let the foam settle.

Cancel mode: If enabled, it allows the bartender to cancel a pour to start a new one.

Repeat mode (hands free): If enabled, the bartender can pour several glasses with a programmable delay between each to allow for the change of glass.

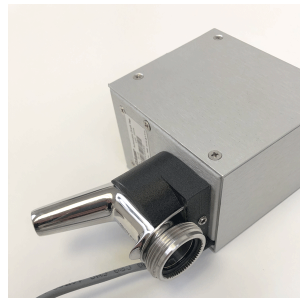
Tap lock mode: If enabled, using a pass code, the tap can be locked. Beer cannot be served until the ADT is unlocked with the pass code.



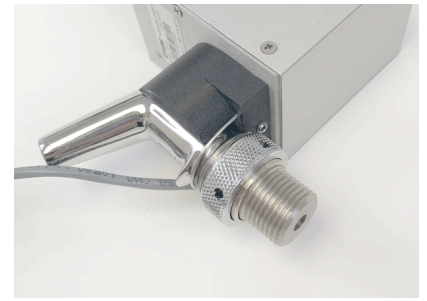
Inside view



Optional tap handle holder

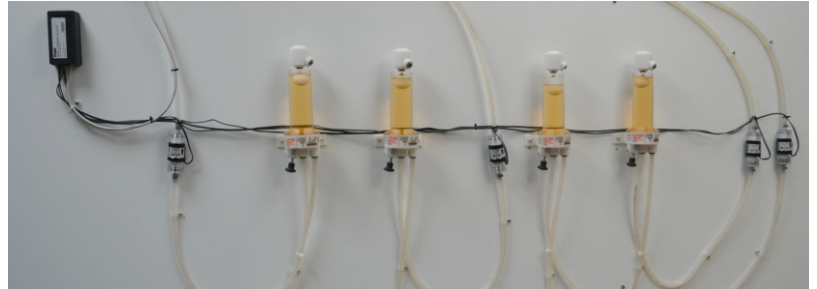


Back View



Optional 1/2 thread adapter for European towers

Optional Junction boxes are available to bring the flow meter cables installed in a beer cooler to the bar using a Cat 5 cable.



Software and interfaceability

The Automatic Draft Tap is available with a Wi-Fi network adapter. The Wi-Fi adapters are pre-set at the factory to communicate directly with a Wi-Fi Access Point provided with the taps to be mounted at the bar.

Connecting this Access Point to your router provides an access from the Auper software to interface the ADTs to the Liquor & Tap manager Live software. When used with this software, the beers served are automatically registered with the time, brand, pour size used and amount owed. The Automatic Draft Taps can also be interfaced with the POS system using the software.

Two operating modes are available:

1- Passive mode. The ADTs are uncoked but the beers served are registered with the time, brand, pour size served and the total amount due. The software will automatically report and email the totals at the end of the shift .
If the POS is also configured to interface with the software, the orders are automatically matched with the beers served.

2- Active or "pre-checking" mode where the ADTs are locked until an order registered in the POS is printed to the Liquor manager software. Only the brands and pour size ordered are allowed to be served.

